



NEPTUNUS

Corrugated sheets





SVK fibre-cement corrugated sheets are the ideal covering for the roofs of all warehouses, industrial and agricultural buildings.

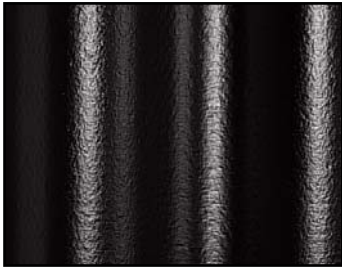
If you want superior quality, use SVK Neptunus corrugated sheets, the strongest on the market.

Choose the best sheet !



Make your choice

Our corrugated sheets have a double layer water-based acrylic coating with additives to offer extra protection against the growth of moss.



333 black



335 red-brown



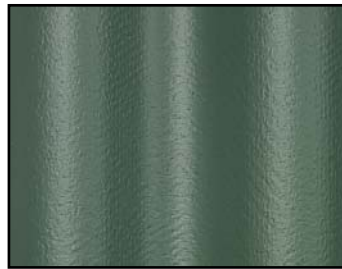
340 terracotta



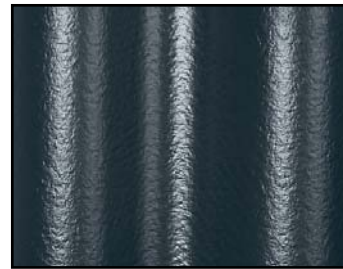
345 cloud-grey



353 manganese brown



337 bronze-green



336 blue-black

Also available in natural grey.

Please note that the demonstrated colours are only an approximate display of the real corrugated sheet colours. Free samples can be obtained on request.



The Neptunus benefits

- **An investment that lasts generations**

- a. The Neptunus corrugated sheets have a **long life span** as they are produced with specially selected high-quality fibres. Only the best raw materials are used to obtain these strong corrugated sheets.
- b. The coating is **characterized by its high quality and ability to retain colour**. This is thanks to an outstanding paint adhesion and decades of experience in paint production.
- c. The Neptunus fibre-cement corrugated sheets benefit from the use of several layers of strong fibre-cement material to achieve the desired sheet thickness. The sheets are then **pressed twice under extreme pressure to guarantee a superior product**. The unique second pressing is what makes SVK corrugated sheets so distinctive and makes them extremely strong and durable.

- **Healthy living conditions for the animals**

- a. **Vapour-open**: Thanks to their pore structure the sheets absorb the vapour inside the building. They absorb the humidity and gradually release it into the open air.
- b. **Sound insulation**: The noise of heavy rain or hail is radically reduced by Neptunus corrugated sheets. This is another unique advantage that SVK fibre-cement sheets have over metal sheets, which cause enormous noise problems. Neptunus corrugated sheets help create a pleasant living environment for people and their animals.

- **Eco-friendly**

As an environmentally-friendly manufacturer, SVK firmly opted for a water-based paint system with minimum impact on the environment.

- **Safe and easy**

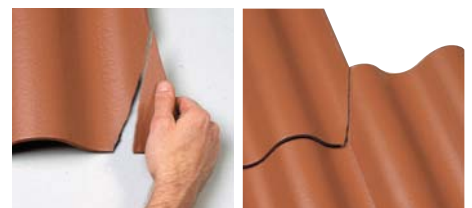
- a. **Safety strips and anti-slip structure**

We care about your safety: every craftsman appreciates Neptunus corrugated sheets because of their waffled anti-slip structure. Together with the reinforcing polyethylene strips they heavily reduce the risk of accidents.

- b. **Pre-grooved corners**

At the four corners our corrugated sheets are pre-grooved, based on a minimal standard end lap of 20 cm. Thanks to this preparation the corners can be removed by hand, hammer or a set of pliers.

- c. Thanks to the four pre-grooved corners you need only **one sheet type for different covering systems**. With SVK corrugated sheets you are the one who decides how the roof is covered.



- **All benefits of fibre-cement**

- a. **Rust and rot resistant**: there is absolutely no metal used in SVK corrugated sheets. This means they cannot possibly rust. This is a unique benefit over metal sheets which are prone to rust when the protective layer is damaged or perforated.
- b. **Favourable reaction to fire**: the sheets have been tested according to the European Standard EN13501-1, and are class A2-s1,d0.
- c. The sheets are made to **withstand the toughest weather conditions**.
- d. **Resistant** to micro-organisms and fungi.



Product data

The best raw materials

SVK Neptunus corrugated sheets are profiled **double-pressed** fibre-cement sheets suitable for roof covering. They are manufactured on the basis of a homogenous mixture of Portland cement, organic fibres, a selection of mineral additives and water.

For various applications

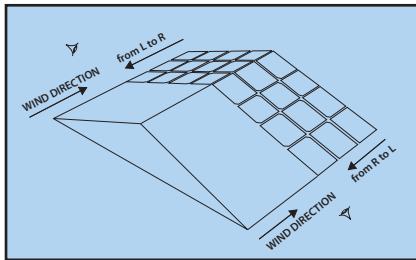
Neptunus corrugated sheets are suitable for agricultural and industrial buildings, halls, warehouses etc.

Advantages of pre-grooved corners

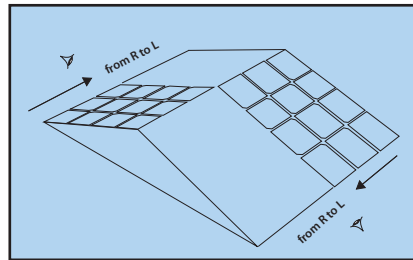
Neptunus corrugated sheets are slightly pre-grooved on the back taking into account a minimum standard end lap of 20 cm. Both types of placement can be carried out with one type of sheet: "classical", against the predominant wind direction, or "round", always from right to left. Depending on the chosen type of placement, you can easily remove the required corners by hand, or by means of a suitable tool.

In fact, there are three important benefits:

1. The craftsman saves a lot of time and consequently a lot of money, which reduces the cost for the customer as well
2. There is no need to pre-calculate the number of sheets with and without corners
3. The dealer needs to stock only one corrugated sheet type.



Classical lay



Round lay

Dimensions

Corrugation width	177 mm
Corrugation height	51 mm
	Category C according to EN 494
Nominal thickness	6.5 mm
Nominal width	1,090 mm
Net covering width	1,048 mm
Number of corrugations	6 ^{1/4}
Length	1,220 1,250 1,525 1,585 1,830
	2,135 2,440 2,750 3,050 mm

Tolerances

Length	+10 mm and -10 mm
Width	+10 mm and -5 mm
Thickness	+0.6 mm and -0.6 mm
Squareness	≤ 6 mm/m

Weight

Length (mm)	1,220	1,250	1,525	1,585	1,830	2,135	2,440	2,750	3,050
Weight (kg)	19.54	20.06	24.48	25.40	29.40	34.24	39.18	44.05	48.94

Mechanical characteristics

- Minimum breaking load per meter width for a span of 1.1 m: ≥ 4,250 N/m
according to EN 494, art. 5.3.3.1: class 1 (= best class)
- Deflection: < 16.6 mm
according to EN 494, art. 5.3.3.2
- Bending moment per meter length with longitudinal deflection of the corrugated sheet: ≥ 55 Nm/m
according to EN 494, art. 5.3.3.3: class X (= best class)
- E-modulus: ca. 10,000 N/mm²

Physical properties

- Density: $\rho \geq 1,400 \text{ kg/m}^3$
according to EN 494, art. 5.3.2
- Thermal conductivity: $\lambda = 0.37 \text{ W/mK}$
- Water absorption: approx. 25 weight percent

Additional assets

- **Guarantee**

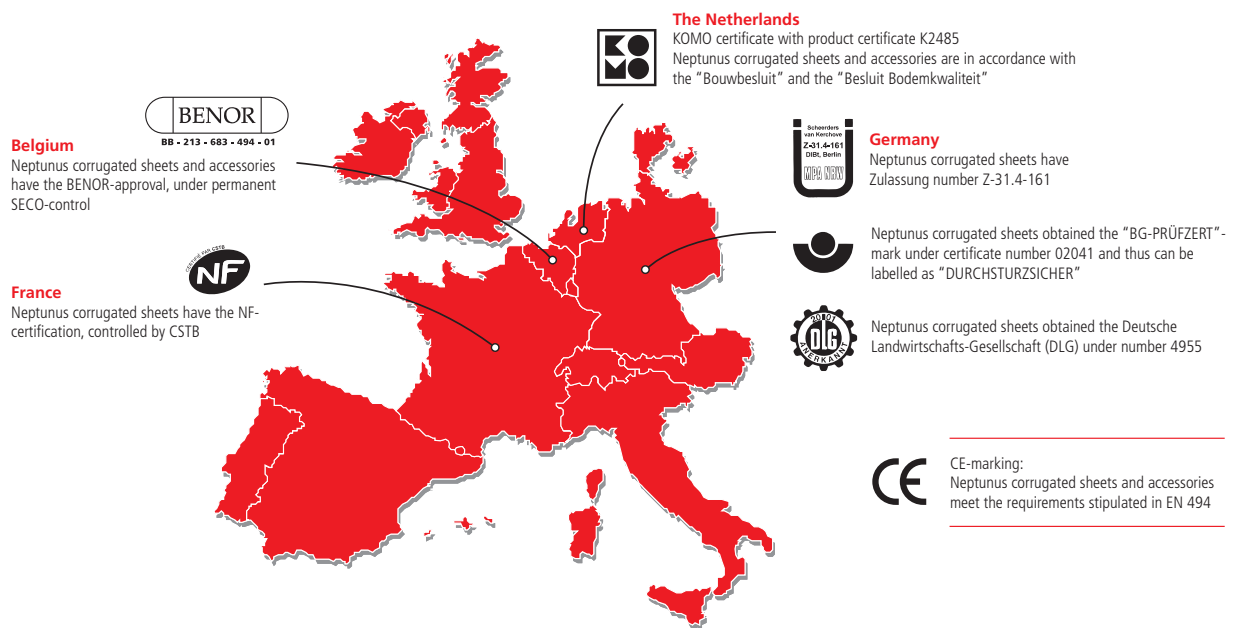
Please contact our sales department for your comprehensive guarantee certificate.

- **Ecologically sound**

The double layer of coating on the front side of the sheets is water-based.
No aggressive solvents are used, which is good for our environment.

- **Certificates**

Our corrugated sheet products are produced to the highest international standards. Certificates prove the fine quality of the sheets.



- **Approved by the Department of Agriculture**

Neptunus corrugated sheets have been approved by the Department of Agriculture, Fisheries and Food for use in grant-aided buildings in Ireland.

- **Excellent service**

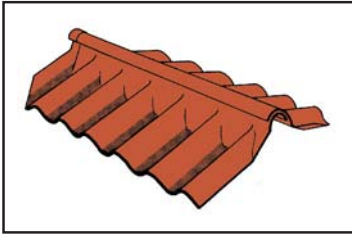
We pride ourselves on delivering excellent customer service.
We deliver your orders in a timely and efficient manner.

- **More than 100 years of experience**

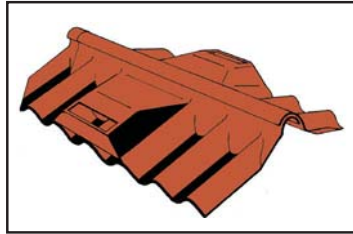
SVK has produced top quality building materials for more than a century.
Take advantage of our experience!

Neptunus accessories

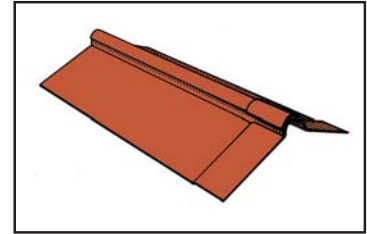
Our wide range of fibre-cement accessories can be used for all commonly used junctions and finishings. You will find a complete description of our accessories in the technical section of our website.



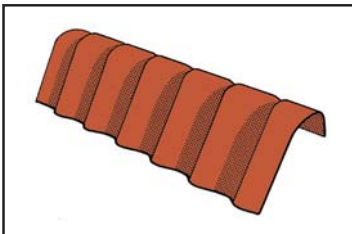
Two-piece close fitting ridge cover



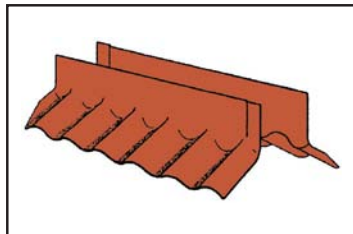
Two-piece ventilating ridge cover



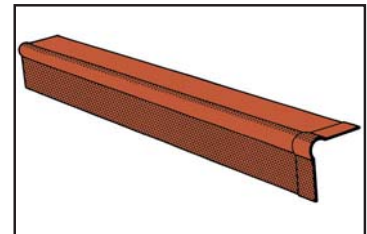
Two-piece plain wing ridge cover



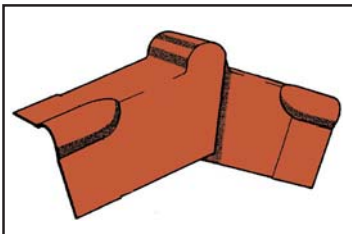
Universal L-shaped ridge



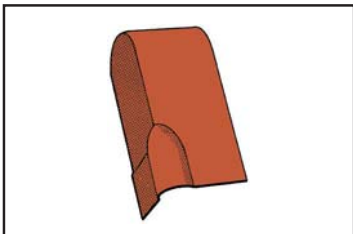
Open ridge



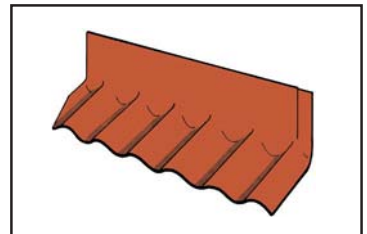
Roll top bargeboard



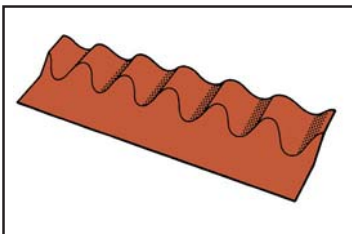
Hooded two-piece ridge finial



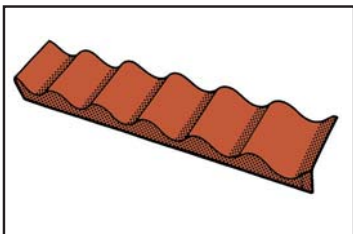
Universal L-shaped ridge finial



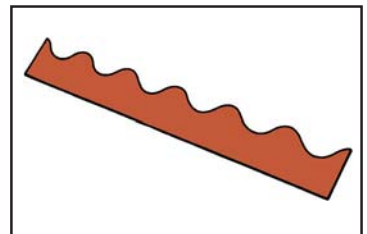
Apron flashing piece



Eaves filler



Eaves corrugation closure



Plain corrugation closure

