

Bringing  
facades  
to life

**MINERAL**

Organic  
Urban  
Graphic

Mineral

**ORGANIC**

Urban  
Graphic

Mineral  
Organic

**URBAN**

Graphic

Mineral  
Organic  
Urban

**GRAPHIC**

**CAREA**<sup>®</sup>

MINERAL COMPOSITE



MADE IN FRANCE

TECHNICAL DATA SHEET AND COLOUR CHART



Bringing  
facades  
to life

**MINERAL**

Organic  
Urban  
Graphic

The **CAREA**<sup>®</sup> ALPHA<sup>®</sup> interlocking facing panel range is growing

## MAGMA - Mineral

The MAGMA look, mineral in essence, presents an organic, velvety and irregular surface. This texture plays with the light, which can highlight its attractive grain. By combining its natural relief with the wide range of colours available, MAGMA allows for facades with a classic or surprising look, depending on your wishes.



**CAREA**<sup>®</sup>  
MINERAL COMPOSITE



### Technical description:

Interlocking facing panel  
Formats: 700 x 470 mm  
Thickness: 3 mm / 5 mm (reinforced)  
Weight: 10 to 13 kg/m<sup>2</sup>

### Advantages:

A wide range of colours  
Economic installation when used as cladding without backing structure (CWoB) Quick installation  
Non-porous material (90% mineral filler)  
Long-lasting, robust and resistant to external and climate environment  
High impact resistant variant suitable for ground floor applications  
No overlapping flashing for Cladding Without Backing Structure (CWoB)  
Fire classification A2-s1,d0  
Secret fix

**NEW**



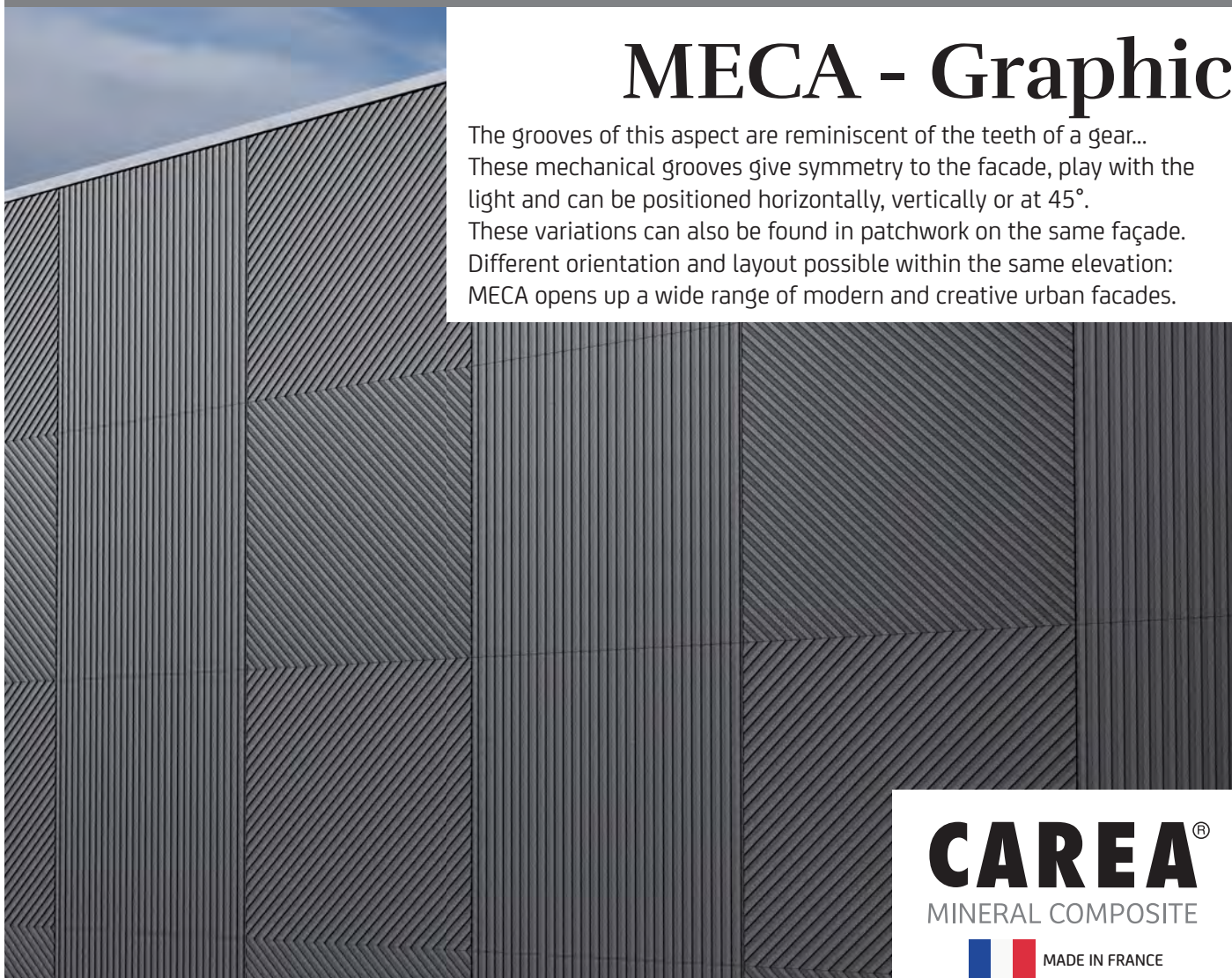
Bringing  
facades  
to life

Mineral  
Organic  
Urban  
**GRAPHIC**

The **CAREA**<sup>®</sup> ARDAL<sup>®</sup> grooved cladding range is expanding

## MECA - Graphic

The grooves of this aspect are reminiscent of the teeth of a gear...  
These mechanical grooves give symmetry to the facade, play with the light and can be positioned horizontally, vertically or at 45°.  
These variations can also be found in patchwork on the same façade.  
Different orientation and layout possible within the same elevation:  
MECA opens up a wide range of modern and creative urban facades.



**CAREA**<sup>®</sup>  
MINERAL COMPOSITE



### Technical description:

Grooved cladding  
Single format: 900 x 900 mm  
Thickness: 11 mm  
Relief depth: 3 mm

### Advantages:

A wide range of colours  
Vertical, horizontal and 45 degree layouts possible  
Non-porous material (90% mineral filler)  
Long-lasting, robust and resistant to external and climate aggressions  
Fire classification A2-s1,d0  
Secret fixings

**NEW**

# 1 # THE CAREA Mineral Composite MATERIAL:

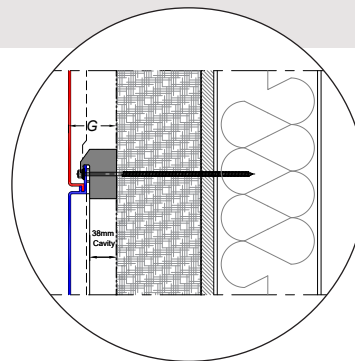
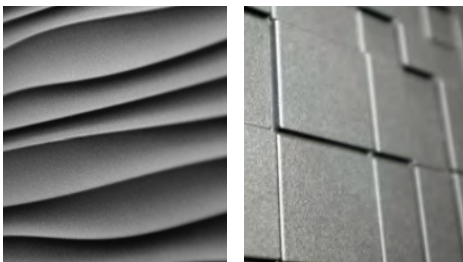


- **European** design and production by CAREA Group
- Natural geo-sourced material based on **90% locally extracted mineral filler**
- Range depth and width (over 1000 combinations)
- Vertical approach and **short circuit** (internal continuous quality control of raw material selection from R&D to the finished product)
- Secret fixings
- Preventive treatments not required (graffiti, pollution)
- High strength (impacts, scratches, ageing, earthquake, fire, etc.)
- Eco-friendly material: **FDES** (Environmental and Health declaration data sheets) available on the INIES database
- Research and development laboratories (R&D) and **integrated Design Office.**
- Internal customer support and approved Training Centre

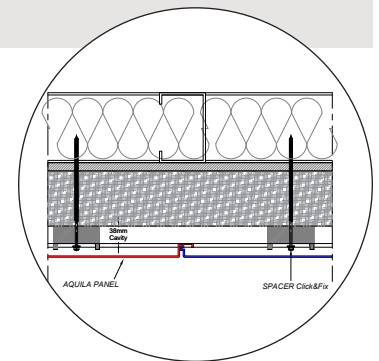
# 2 # TECHNOLOGIES / FACING TYPES Mineral Composite:

## PRESSED MINERAL COMPOSITE (fine mineral fillers)

- Face profiles: **CAREA interlocking** (Pages 4-15)



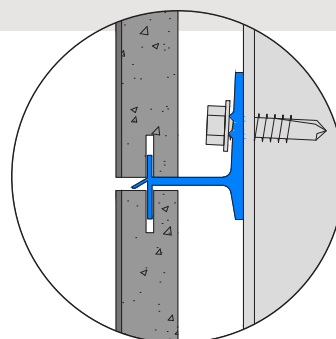
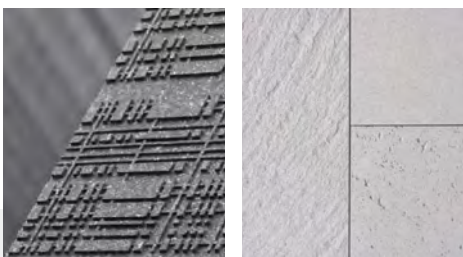
Horizontal interlocking



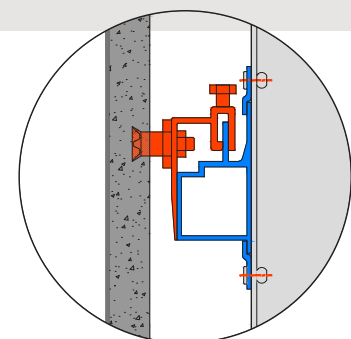
Vertical interlocking

## MOULDED MINERAL COMPOSITE (crushed aggregate)

- Face profiles: **CAREA grooved/CAREA anchor facing** (Pages 16-34)



CAREA grooved



CAREA anchor facing



## 2 INSTALLATION SYSTEMS FOR ALL SUPPORTS:

**CWoB** (Cladding without backing structure)

**CWB** (Cladding with backing structure)

# CWoB



*CAREA INTERLOCKING IN CWoB*

# CWB



*CAREA INTERLOCKING IN CWB*



*CAREA HORIZONTAL GROOVED IN CWB*



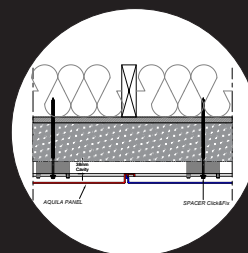
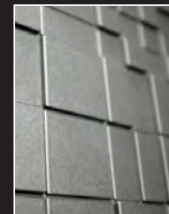
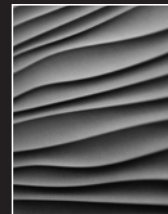
*CAREA VERTICAL GROOVED IN CWB*



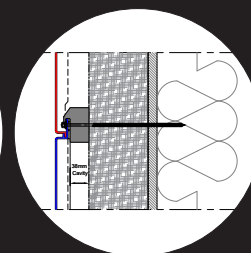
*CAREA INTERNAL ANCHOR FIX IN CWB*

# # CAREA INTERLOCKING

- P 7 **Colour chart**
- P 10 **Our aspects**
- P 12 **Technical specifications**
- P 13 **Support systems**
- P 14 **CWoB System thicknesses**
- P 15 **CWoB Installation systems**
- P 16 **CWoB Principle cross sections**
- P 17 **CWoB Starting points**
- P 18 **CWoB Bays**
- P 19 **CWoB Special zones/corners**
- P 20 **CWB System thicknesses**
- P 21 **CWB Installation systems**
- P 22 **CWB Principle cross sections**
- P 23 **CWB Starting points**
- P 24 **CWB Bays**
- P 25 **CWB Special zones/corners**



Interlocking  
Horizontal



Interlocking  
Vertical

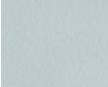




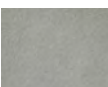


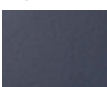
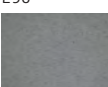
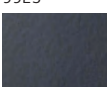

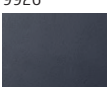
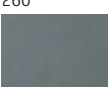


# CAREA Interlocking: Colour chart

## WHITE BEIGE

	
Shell white 9940	
	
Murcia white 277	Ochre 30
	
Mottled ash white 9924	Cork 164
	
Foam white 9922	Arena 271
	
White 73	Mottled natural stone 9942
	
Pearl white 99	Mottled Ivory 9939
	
Chalk 71	Linen 250
	
Sand 70	Sepia 257

## GREY BLACK

	
Silver 90	
	
Cloud grey 9923	Quartz grey 7193
	
Safari 6120	Anthracite grey 7161
	
Mouse 299	Slate grey 7151
	
Galapagos 290	Blue grey 9925
	
Iron 264	Opak black 9926
	
Volcano 260	Black 60
	
Grey green 7190	




## BROWN RED ORANGE YELLOW

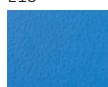
	
Burgundy 3150	
	
Raspberry red 3113	Saffron 158
	
Crimson 3102	Chocolate 2838
	
Terre 55	Mocha 254
	
Terra Cotta 471	Aubergine 40607
	
	Yellow zinc 1018

## GREEN

	
Mint green 9944	
	
Bronze 263	Turf green 6017
	
Green tea 6110	Pine green 6002
	
Light green 9941	Sage green 9945
	
Clay green 9943	Emerald 244
	
Prairie 6018	
	
Apple green 249	

## BLUE


Cobalt 215

Turquin 5017

Azure 51273

Maya 218

Electric 5015


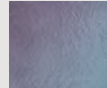


We can study all special colours.

*Despite the great care taken in printing this document, there may be slight differences in shade with the delivered products. Depending on how the façade is lit, slight differences in colour can appear on the facings.*

## HAMMERED

	
Porpoise 120	Steel 190
	
Anthracite 160	

## IRIDESCENT

	
Ocean 9934	Lilac 9932
	
Sunset 9931	Tropical Forest 9933

## METALLIC

		
Copper 9936	Glittering gold 9935	Brown green metallic 9929
		
Rainbow grey 9938	Silver grey 9937	



Port 9 Apartments (FR) #  
Architect: studio A3 #  
Aquila MATT, colour Iridescent Lilac (9932) & Turquin (5017)

## Carea Interlocking



Ital 3 (FR) #  
Aquila PIXEL, colour Iridescent Lilac (9932)



Le Moulin Liot Apartments (FR) #  
Architect: Boucheron Architecture JBA #  
Aquila CARVI & Alpha PIERRE DE LOIRE, colour Silver (90)





Kays Medical, Liverpool (UK) #  
Architect: Denovo Ltd #  
Aquila Dune, colour Iridescent Sunset (9931)

CAREA®



Jean Moulin Foster home (FR) #  
Architect: Decaux Architecte #  
Alpha Graf 200, Colour Mocha (254)

# CAREA Interlocking: Our aspects

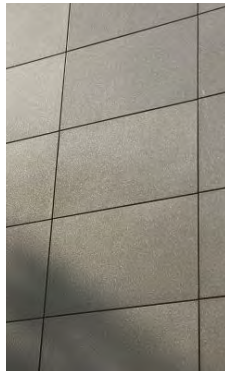
ASPECTS & FORMATS (WxH in cm)



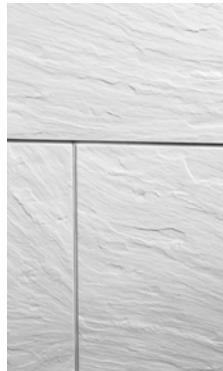
ALPHA



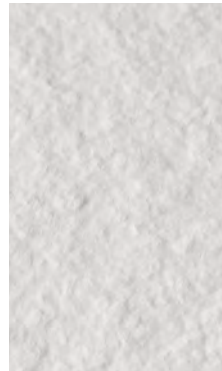
PIERRE DU SUD -  
Mineral



SMOOTH -  
Urban



PIERRE DE LOIRE -  
Mineral



MAGMA -  
Mineral

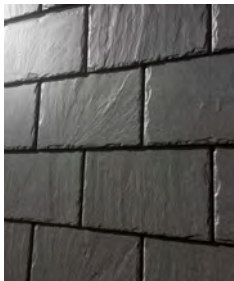
Single format 70 x 47 cm

51 x 34 cm

70 x 47 cm

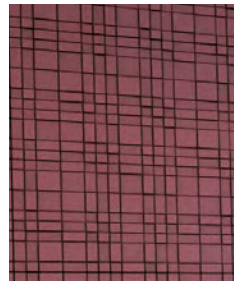


GRAF MONOLITIC

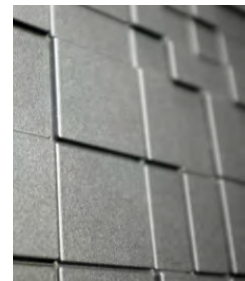


GRAF SLATE -  
Mineral

63 x 51 cm



GRAF100 -  
Graphic



GRAF200 -  
Graphic



GRAF 900 -  
Mineral

65 x 52 cm

60 x 60 cm

See  
colours

P7



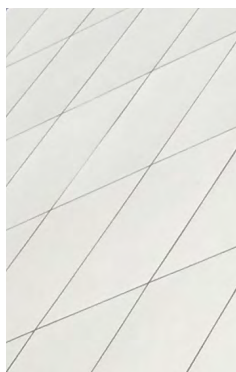


# CAREA Interlocking: Our aspects

ASPECTS & FORMATS (WxH in cm)



AQUILA



SMOOTH -  
Urban

60 x 30 cm

60 x 60 cm

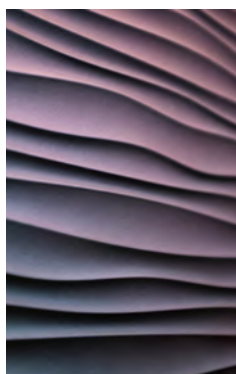
60 x 120 cm

120 x 60 cm

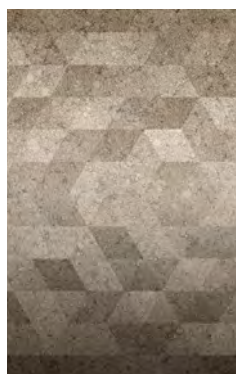
135 x 60 cm



AQUILA



DUNE -  
Organic



PIXEL -  
Graphic



CARVI -  
Urban

60 x 120 cm

120 x 60 cm

135 x 60 cm



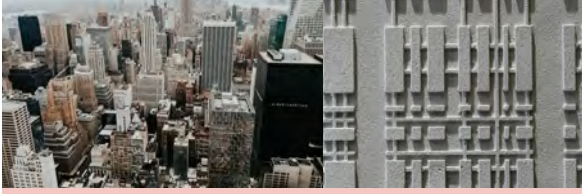
See  
colours

P7

# CAREA Interlocking: Technical specifications

ALPHA TECHNICAL SPECIFICATIONS								
Aspects	Panel dimensions WxH (in mm)	Thickness		Weight per m <sup>2</sup> in kg (without insulation)		Join dimensions WxD (in mm)	Number of panels per m <sup>2</sup>	Number of fixings per m <sup>2</sup>
		Standard	Solid Q4	Standard	Solid Q4			
Pierre du Sud	510 x 340 700 x 470	3	5	7	12	6 x 4	5,76	11,5
Pierre de Loire							3	6
Smooth							3	6
Magma							3	6
Graf Slate	630 x 510	3		7,8	9,3	3 x 4	3	6
Graf 900	650 x 520	5			14,7	8 x 12	3	6
Graf 100	600 x 600	3	5	9,7	14,2	Zero join	2,78	5,5
Graf 200								

AQUILA TECHNICAL SPECIFICATIONS								
Aspects	Panel dimensions WxH (in mm)	Thickness		Weight per m <sup>2</sup> in kg (without insulation)		Join dimensions WxD (in mm)	Number of panels per m <sup>2</sup>	Number of fixings per m <sup>2</sup>
		Standard	Solid Q4	Standard	Solid Q4			
Pixel	600 x 1200 1200 x 600 1350 x 600	4	5	9		6 x 15	1,38 1,24	4,15 à 6,9 3,7 à 6,15
Carvi				12,5	13			
Dune				12,5	13			
Smooth				9	12,5			
Smooth	600 x 600 600 x 300 600 x 1200 1200 x 600 1350 x 600	2,8	4	9	12,5		2,78 5,56 1,38 1,24	5,5 11 4,15 à 6,9 3,7 à 6,15
		4						



# CAREA Interlocking: Support systems

Masonry / Concrete

TSB

CLT

Metsec

CWB



CWoB



EUROCLASS A2-s1, d0

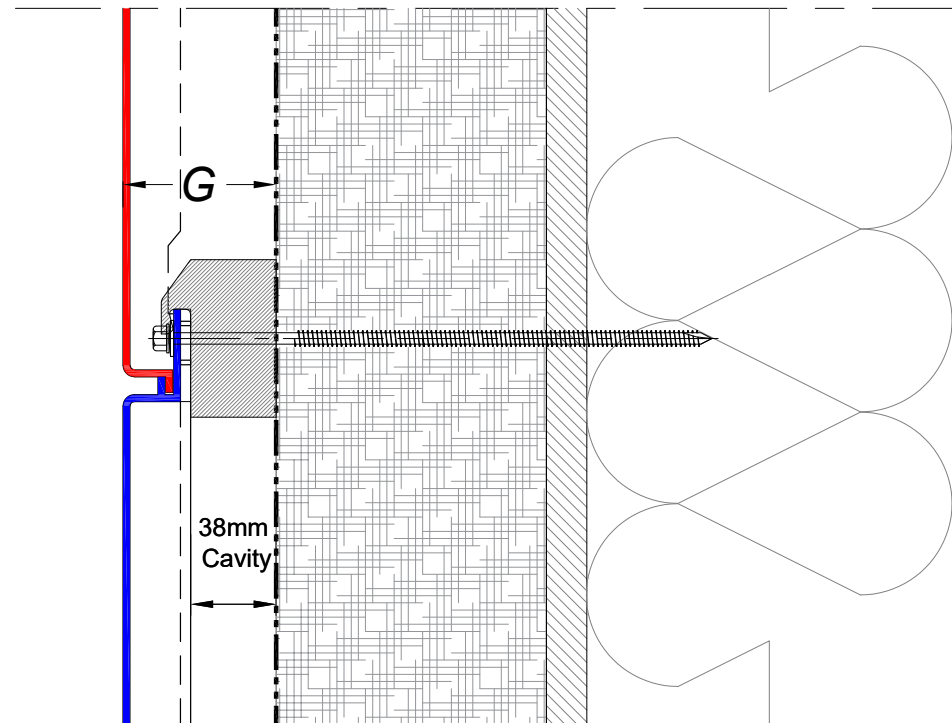
Installation systems	Support wall				Fire safety
	Masonry Concrete	TSB Timber Structure Building	CLT Cross Laminated Timber	Metsec	
CAREA <sup>®</sup> Interlocking	CWB CWoB	CWB CWoB	CWB	CWoB	✓ (CWoB Without tab) EUROCLASS A2-s1,d0

**CWB** : Cladding with backing structure

**CWoB** : Cladding without backing structure

# CAREA Interlocking: System thicknesses

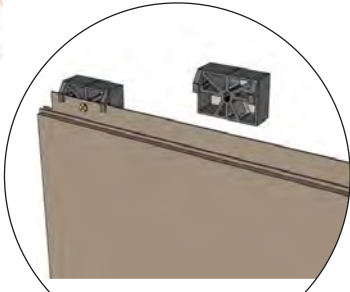
# CW**CAREA**oB



Product	Aspect	G measurement	
		Total thickness (in mm)	
		Standard	Solid
ALPHA	SMOOTH	58	60
	PIERRE DU SUD	58	60
	PIERRE DE LOIRE	58	60
	MAGMA	58	60
ALPHA GRAF MONOLITIK	GRAF 100	73	75
	GRAF 200	73	75
	GRAF 900	69	
	GRAF SLATE	61	
AQUILA	SMOOTH	68	69
	DUNE / PIXEL	72	73
	CARVI	70	71

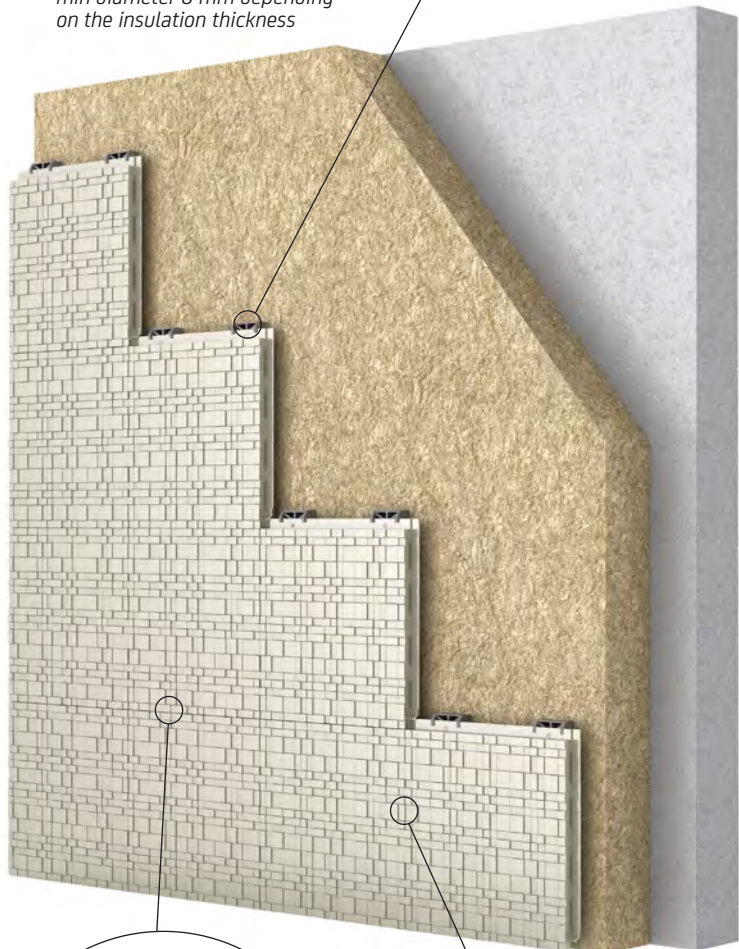


# CAREA Interlocking: Installation systems



Nylon anchor / steel fixing,  
min diameter 8 mm depending  
on the insulation thickness

## CWoB<sup>CAREA</sup> (Cladding without backing structure)



### Rigid insulation (Cladding without backing structure)

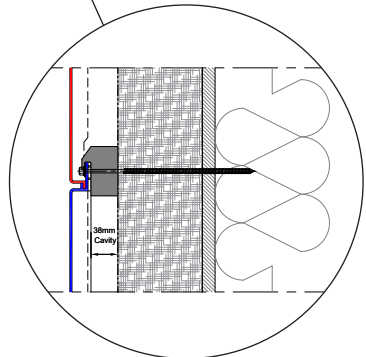
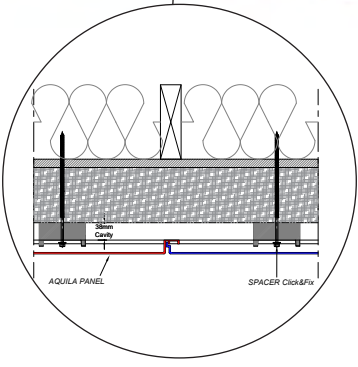
Thickness:  
up to 240 mm for CWoB



Rock wool min. 90 kg/m<sup>3</sup>



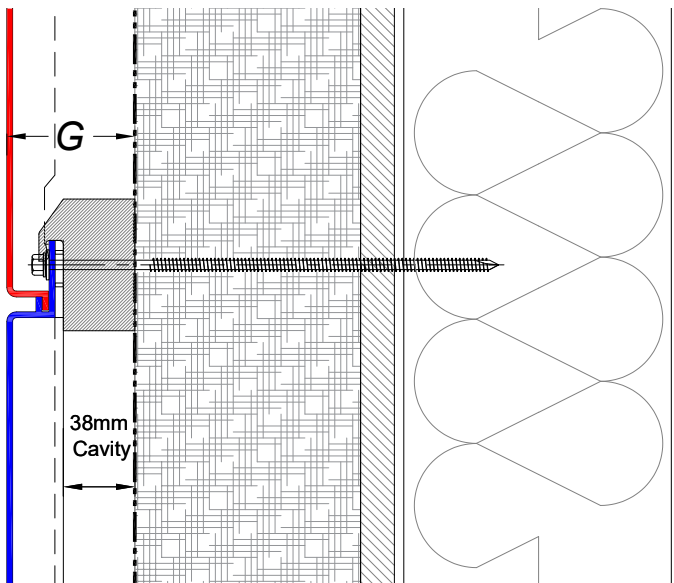
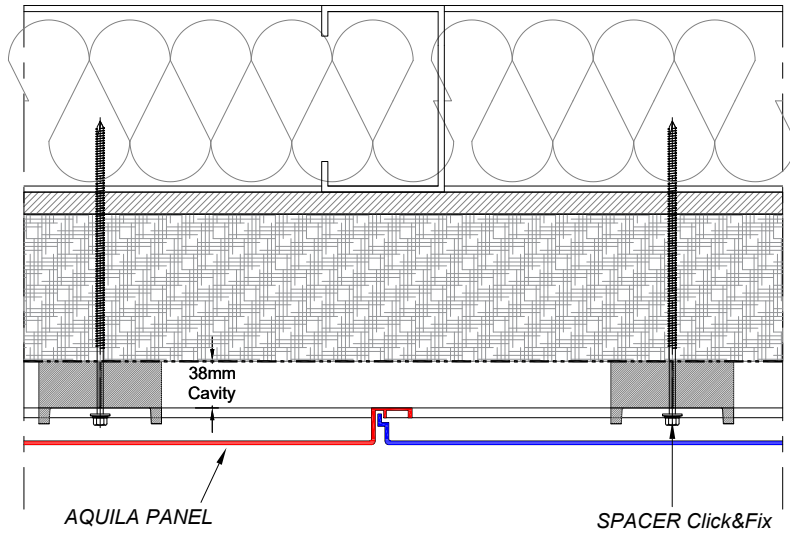
Phenolic foam



# CAREA Interlocking: Principle cross sections

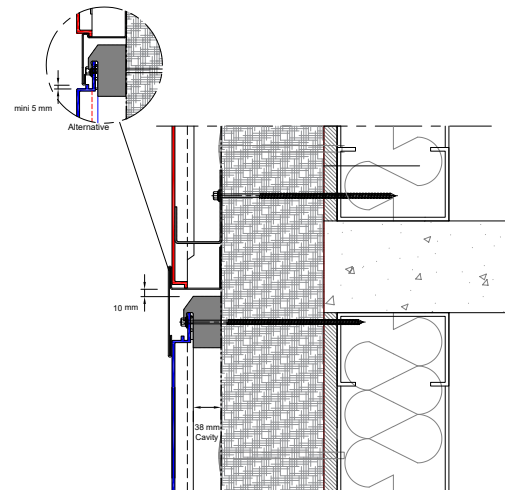
## CW**o**B (Cladding without backing structure)

Vertical section

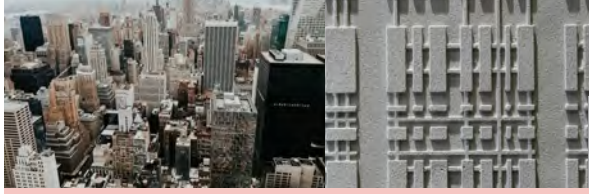


Horizontal section

Expansion joint

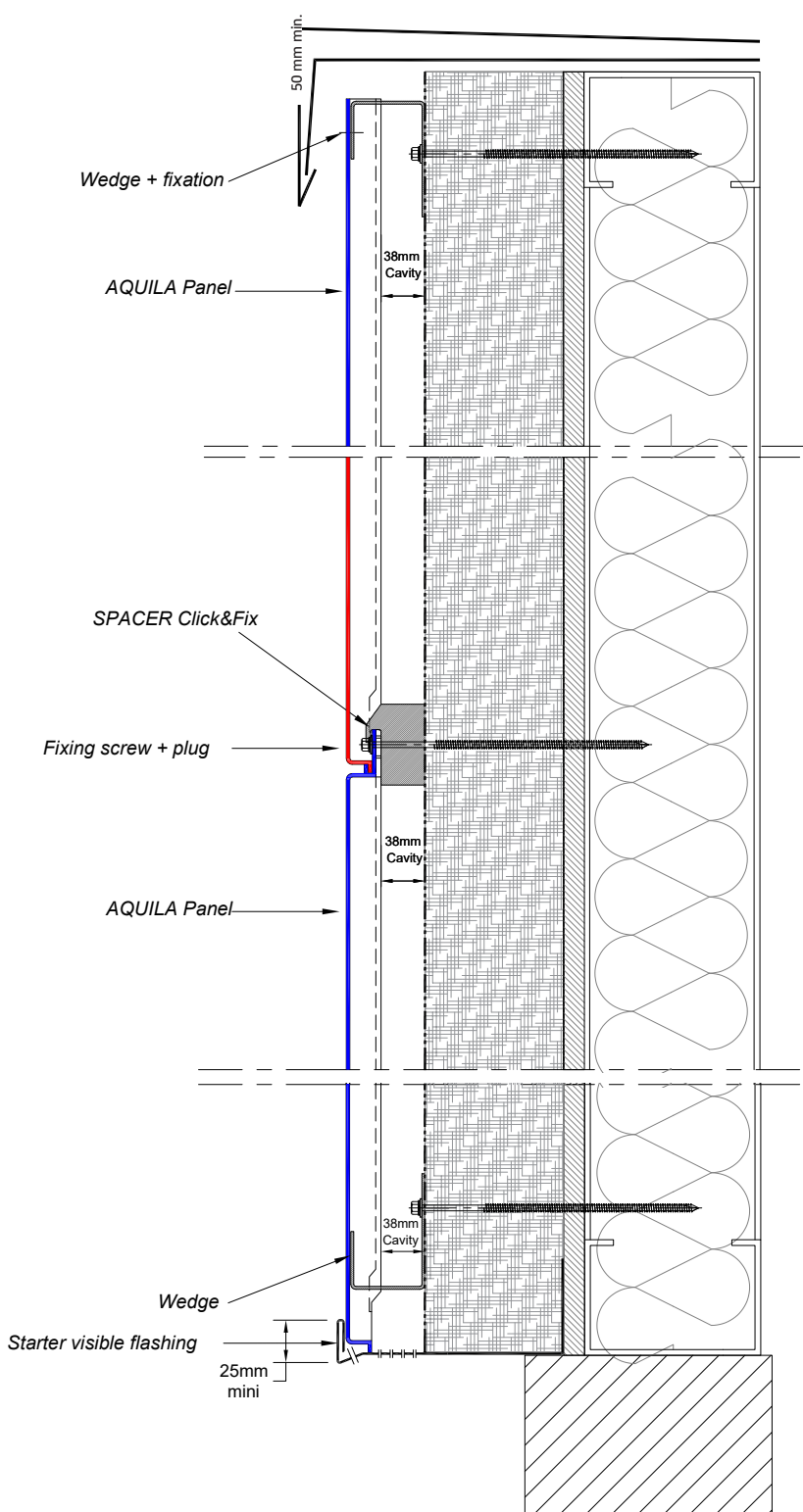






# CAREA Interlocking: Starting points

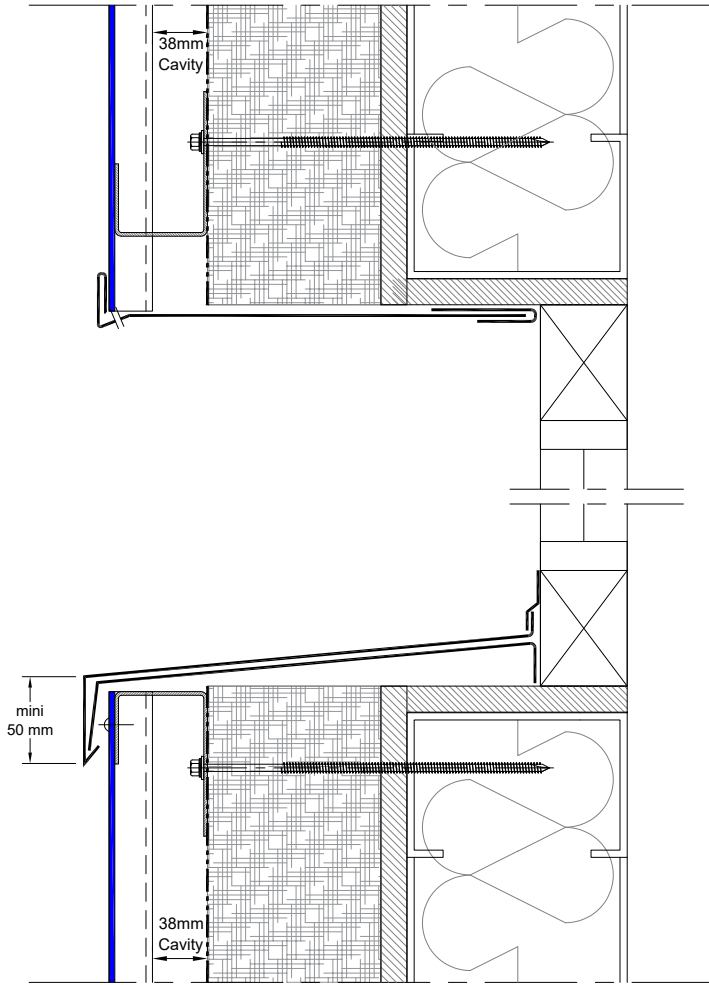
## CWoB (Cladding without backing structure)



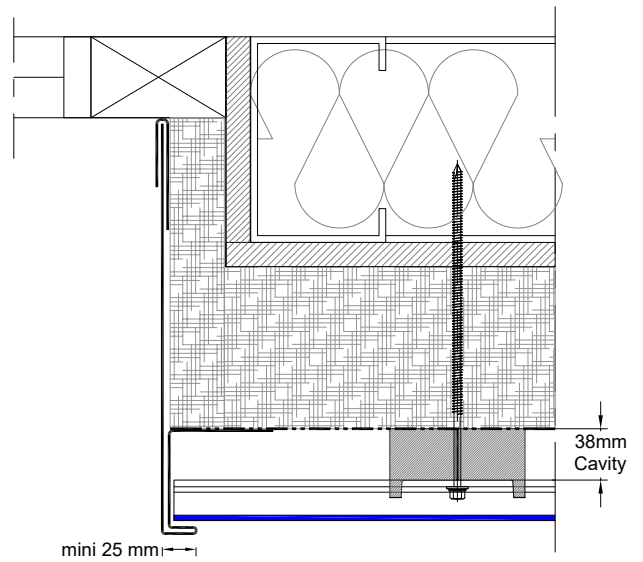
# CAREA Interlocking: Bays

## CWoB (Cladding without backing structure)

Lintel section



Support section





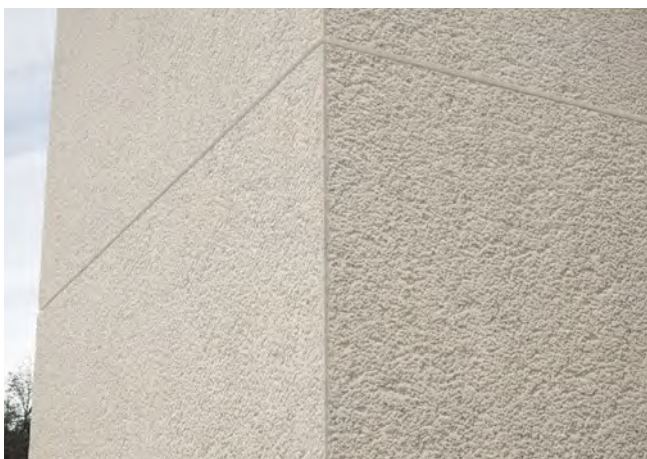
# CAREA Interlocking: Special zones/corners

**CWob**

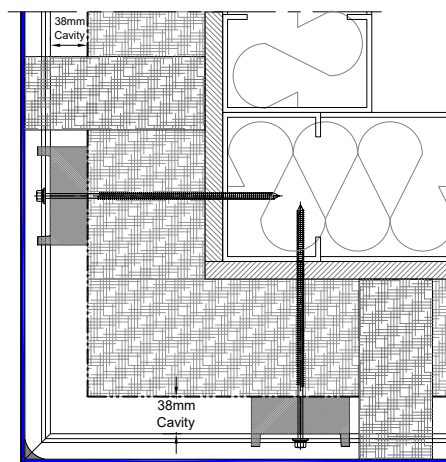
(Cladding without backing structure)

Single block bonded corner\*

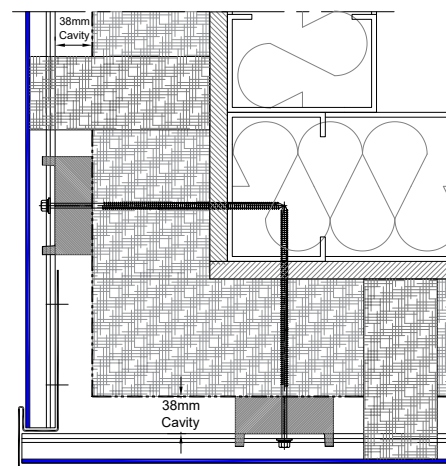
\*Made by the fixer on site



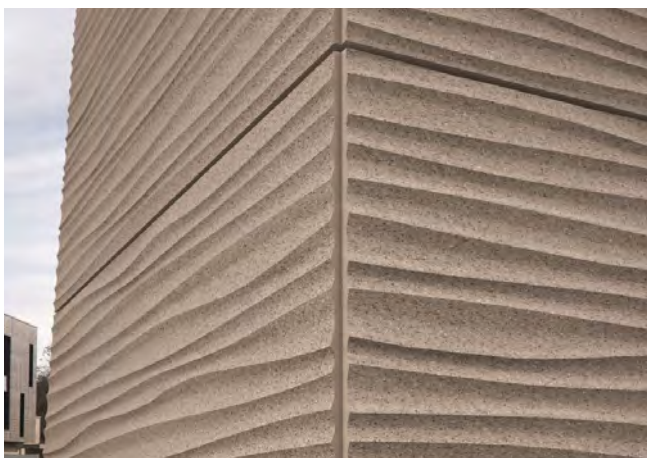
Bonded external corner



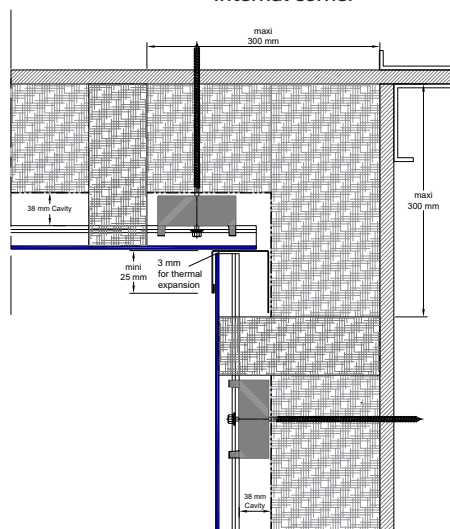
External corner with added profile



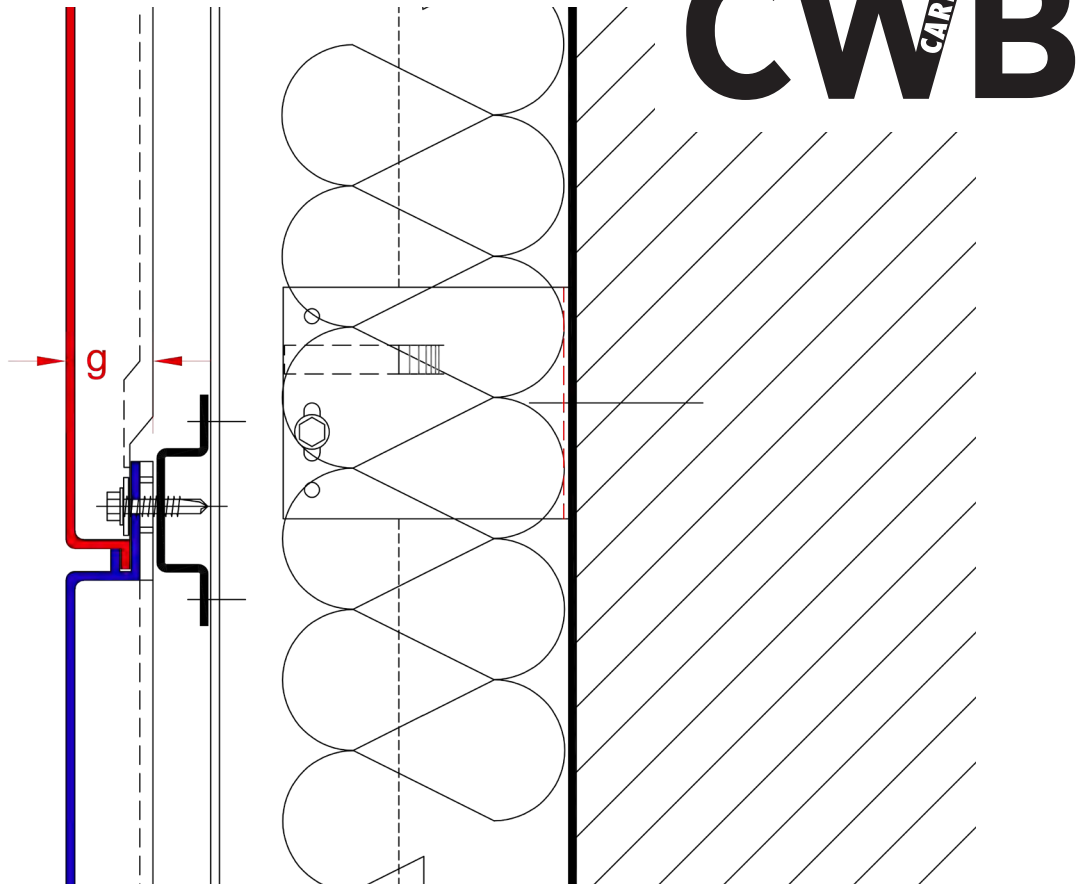
External closure corner detail



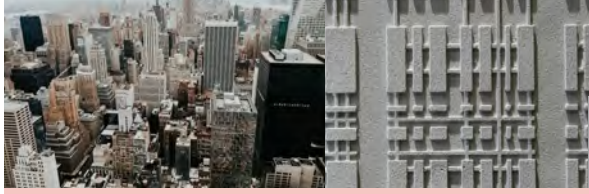
Internal corner



# CAREA Interlocking: System thicknesses



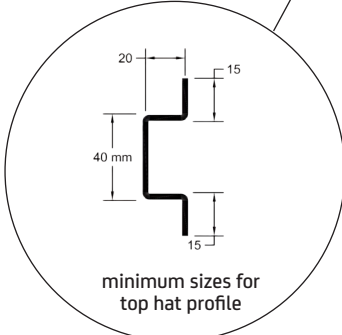
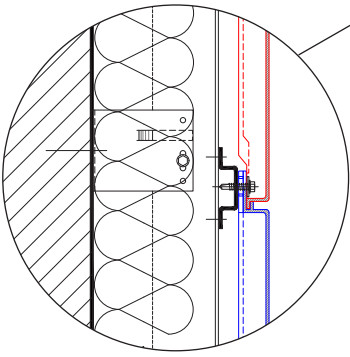
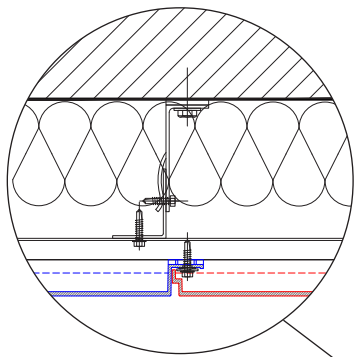
Product	Aspect	G measurement	
		Standard	Solid
ALPHA	SMOOTH	20	22
	PIERRE DU SUD	20	22
	PIERRE DE LOIRE	20	22
ALPHA GRAF MONOLITIK	GRAF 100	35	37
	GRAF 200	35	37
	GRAF 900	31	
	GRAF SLATE	23	
AQUILA	SMOOTH	30	31
	DUNE / PIXEL	34	35
	CARVI	32	33



# CAREA Interlocking: Installation systems



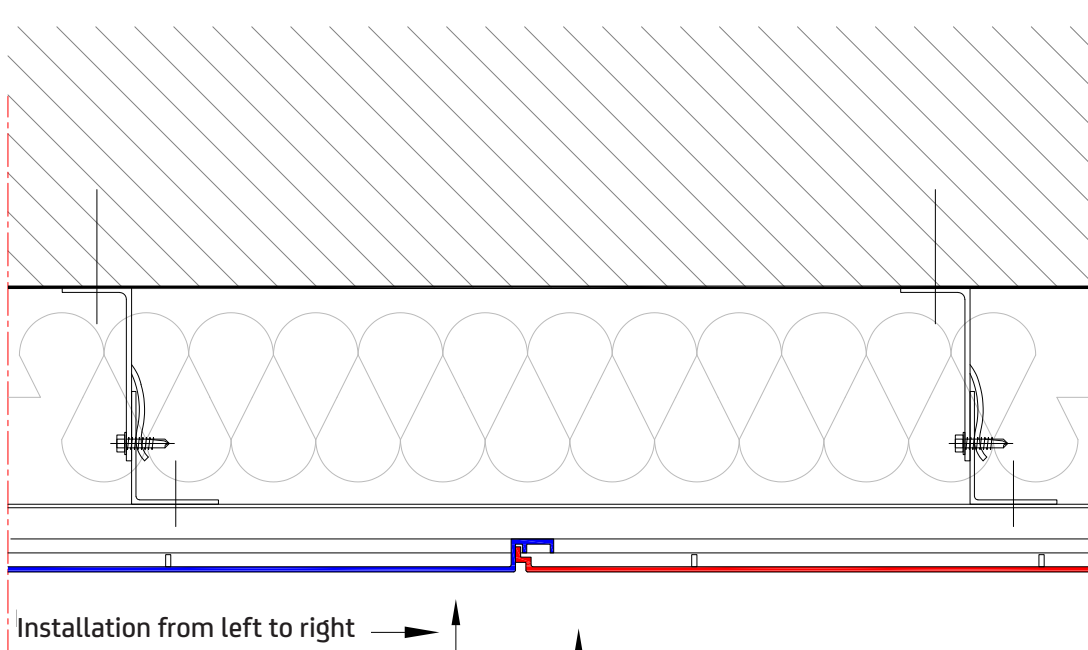
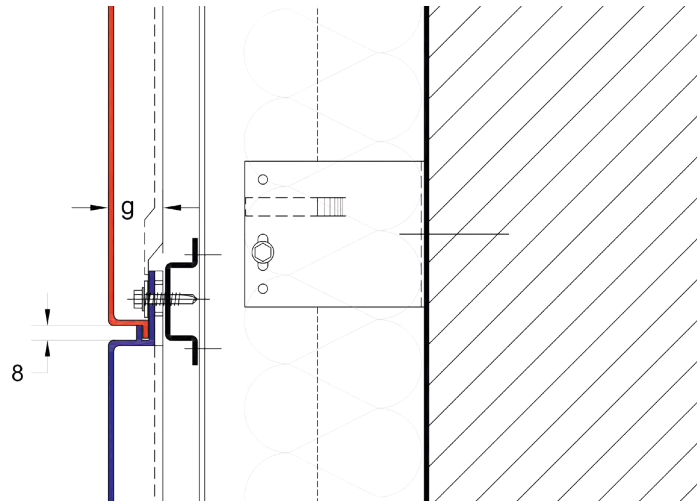
## CWB<sup>CAREA</sup> (Cladding with backing structure)



# CAREA Interlocking: Principle cross sections

## CWB (Cladding with backing structure)

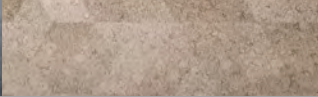
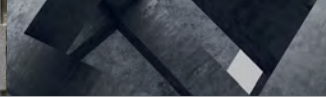
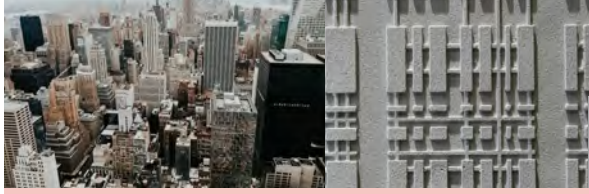
Vertical section



Horizontal section

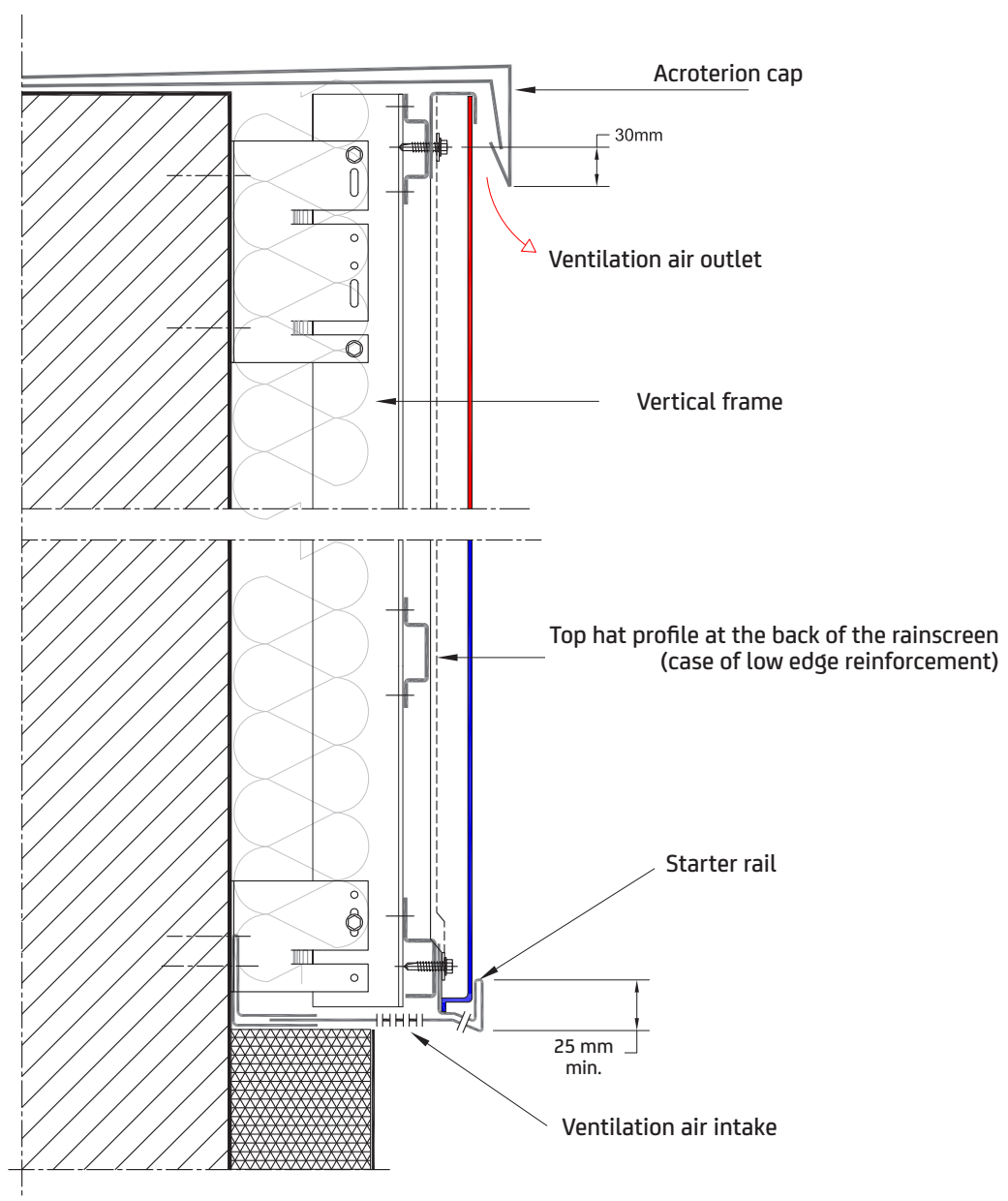
Interlocking panel

Joint between slab



# CAREA Interlocking: Starting points

## CWB (Cladding with backing structure)



# CAREA Interlocking: Bays

## CWB (Cladding with backing structure)

Lintel section

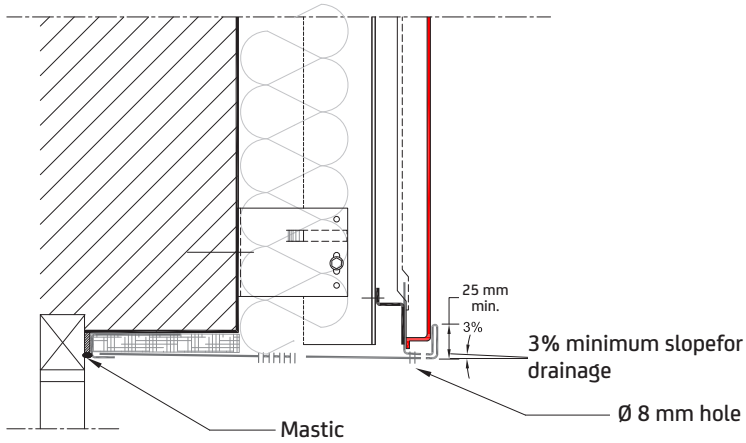
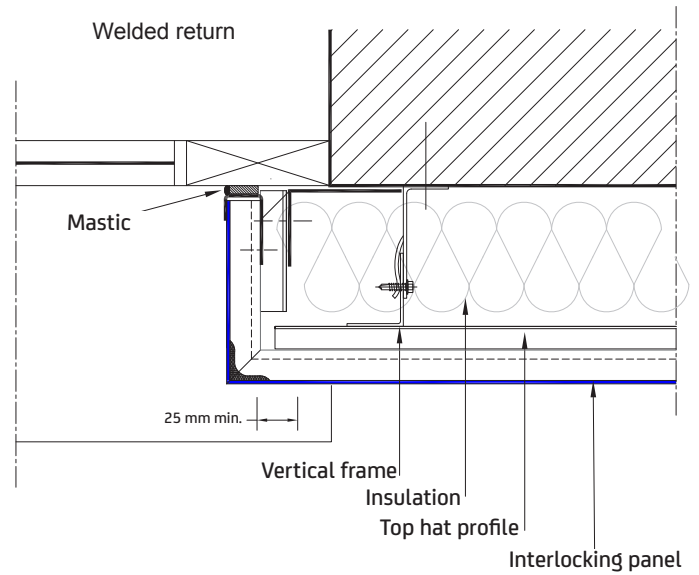


Table cross section



Support section

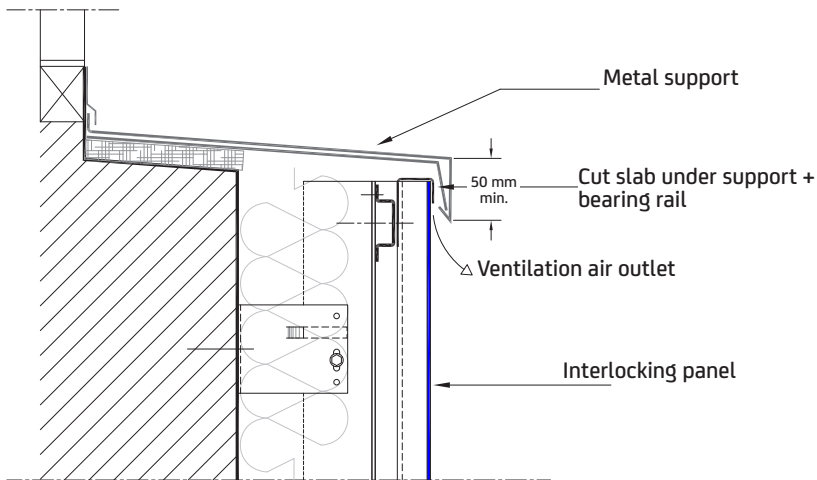
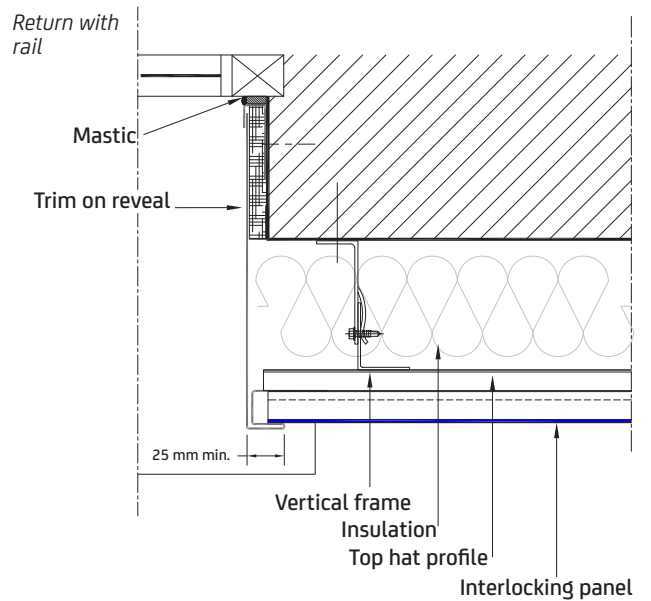
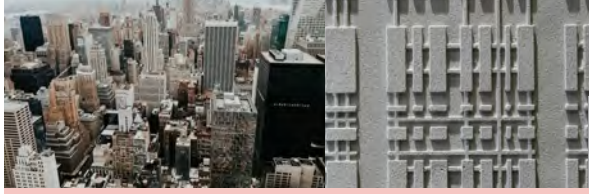


Table cross section





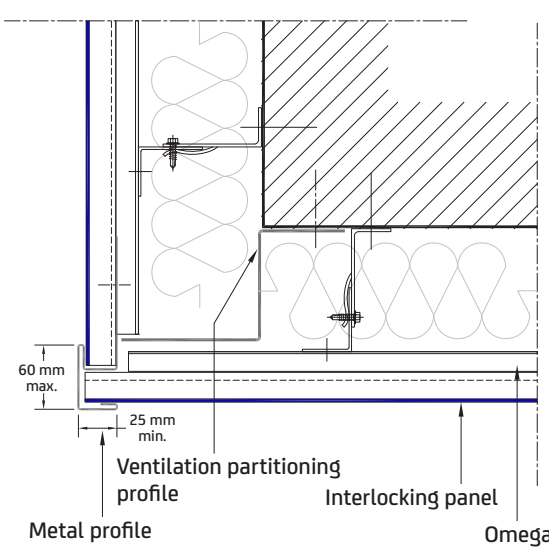
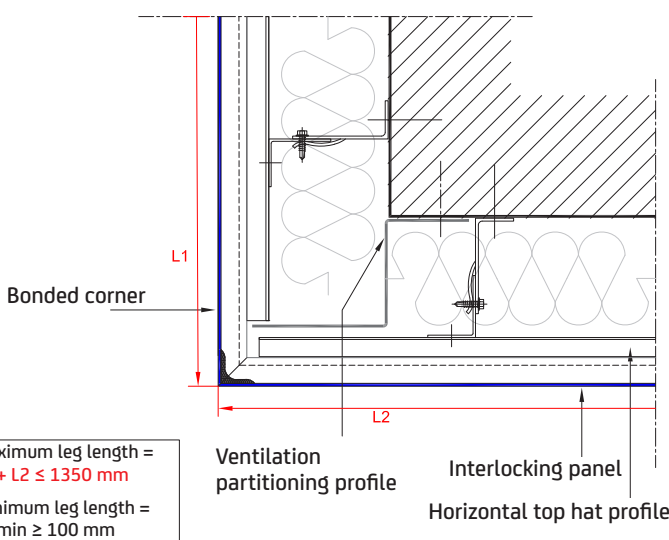


# CAREA Interlocking: Special zones/corners

## CWB<sup>CAREA</sup> (Cladding with backing structure)

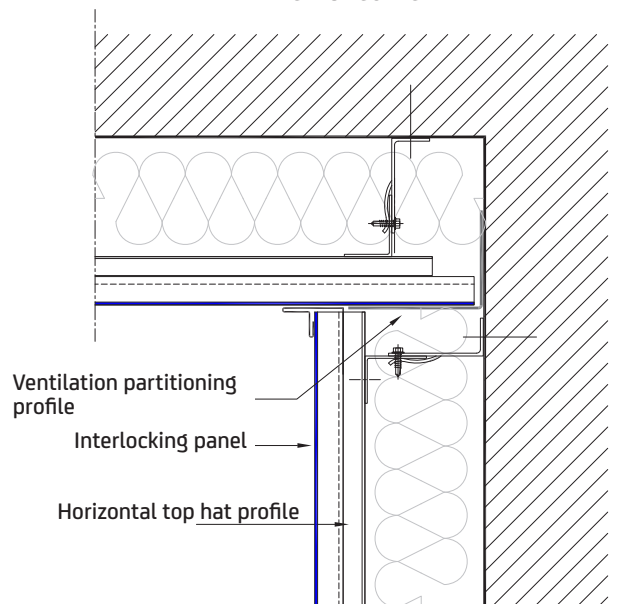
Bonded external corner

External corner metal form



Maximum leg length =  
 $L1 + L2 \leq 1350 \text{ mm}$   
Minimum leg length =  
 $L2 \text{ min} \geq 100 \text{ mm}$

Internal corner



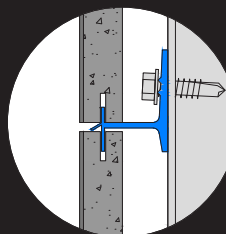
# # CAREA GROOVED / ANCHOR FACING

## Grooved

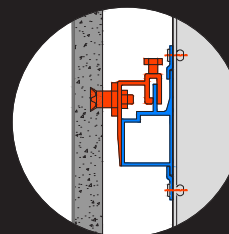
- P 27 **Colour chart**
- P 30 **Our aspects**
- P 33 **Support systems**
- P 34 **CWB Horizontal Installation systems**
- P 35 **CWB Horizontal System thicknesses**
- P 36 **CWB Horizontal Principle cross sections**
- P 37 **CWB Horizontal Starting points**
- P 38 **CWB Horizontal Openings**
- P 39 **CWB Horizontal Special zones/corners**
- P 40 **Special zones/corners**
- P 41 **Installation systems CWB Horizontal**
- P 42 **Zero vertical joint installation**
- P 43 **System thicknesses CWB Vertical**
- P 44 **Principle cross sections CWB Vertical**
- P 45 **Starting points CWB Vertical**
- P 46 **Openings CWB Vertical**
- P 47 **Special zones/corners CWB Vertical**

## Anchor facing

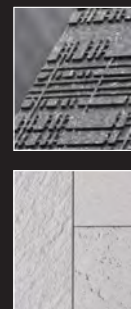
- P 48 **Our aspects**
- P 49 **Support systems**
- P 50 **Installation systems**
- P 51 **Principle cross sections**
- P 52 **Starting points**
- P 53 **Openings**
- P 54 **Special zone /corners**
- P 55 **Special zone synopsis**
  
- P 56 **Technical support**
- P 57 **Regulatory summary**



CAREA grooved



CAREA anchor facing





# CAREA Grooved / Insert: Colour chart

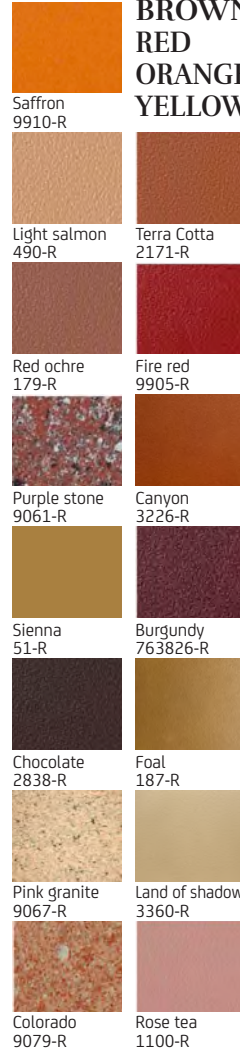
## WHITE BEIGE



## GREY BLACK



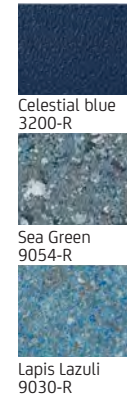
## BROWN RED ORANGE YELLOW



## GREEN



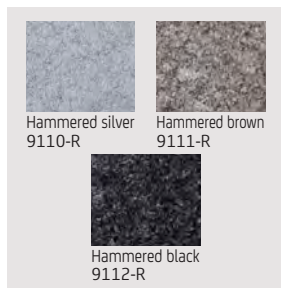
## BLUE



We can study all special colours.

Despite the great care taken in printing this document, there may be slight differences in shade with the delivered products. Depending on how the façade is lit, slight differences in colour can appear on the facings.

## HAMMERED



## IRIDESCENT



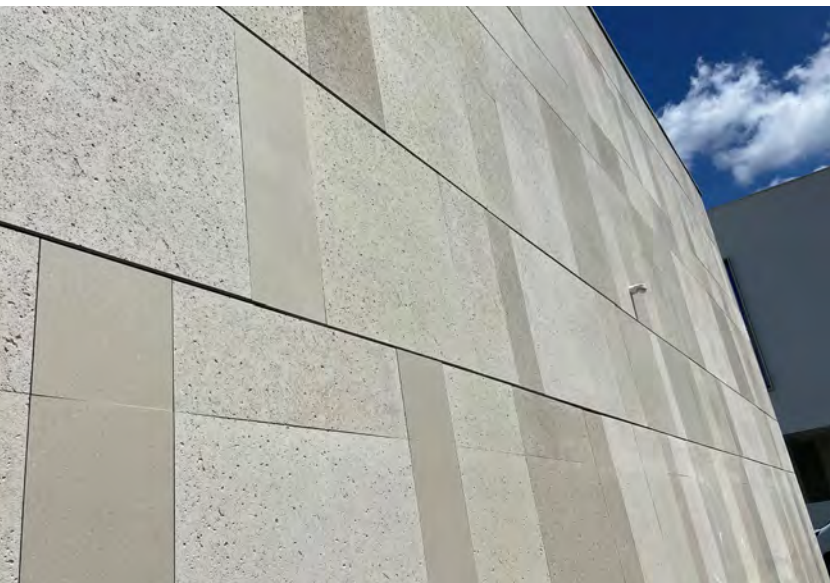
## METALLIC



Carea  
Anchor facing

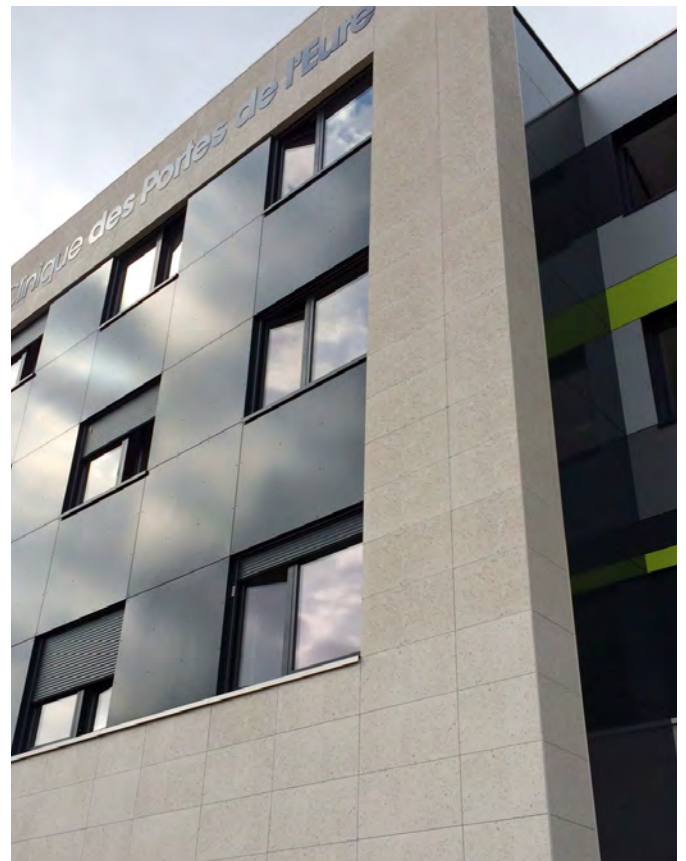


Hôtel McGallery La Grande Terrasse, Châtelailon (FR) #  
Architect: ABP Architectes #  
Artema curved RIVEN, Colour Mottled ivory (9103-R)



Maison de la Culture, Bourges (FR) #  
Architects: Ivars & Ballet #  
Ardal SHELL & SMOOTH MATT, colour Mottled ivory  
(9103-R) & Samoa (9062-R)

Carea  
Horizontal Grooved



Portes de l'Eure Clinic, Vernon (FR) #  
Architects: AACD #  
Ardal RIVEN, colour Iceberg (9037-R)

# Carea Horizontal Grooved



Spire Hospital, Manchester (UK) #  
Architects: Halliday Meecham Architects #  
Acantha RIVEN, colour Basalt (9081-R)



Camille Claudel Kindergarten, Oissel (FR) #  
Architects: Lethelier Norcia Bellet #  
Acantha MOON, colour Iridescent Sunset (9931-R)



Bank head office, Beauvais (FR)  
Architects: AAD  
Acantha SMOOTH MATT & PAPYRUS, colour Ice white (0010-R)

# CAREA Grooved: Our aspects

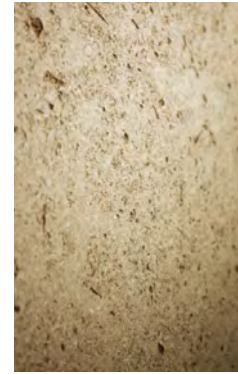
ASPECTS & FORMATS (WxH in cm)



ARDAL 11 mm

## 23 FORMATS (L-Chant grooved x h in mm)

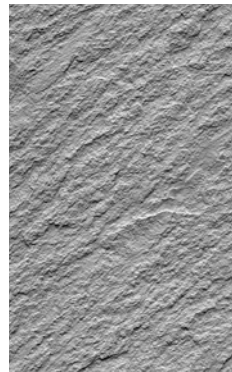
1200x600	550 x 900
900 x 900	500 x 900
900 x 600	450 x 900
900 x 550	450 x 450
900 x 500	400 x 600
900 x 450	300 x 900
900 x 300	300 x 600
900 x 200	250 x 600
600 x 900	200 x 600
600 x 600	
600 x 400	
600 x 300	
600 x 250	
600 x 200	



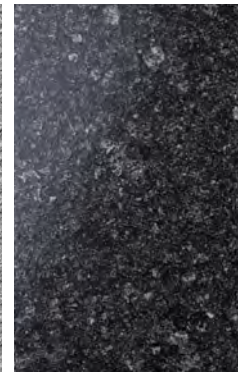
SHELL -  
Mineral



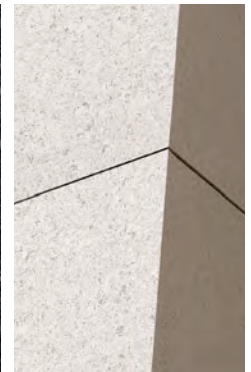
MECA -  
Graphic  
Single format  
90 x 90 cm



RIVEN -  
Mineral



GLOSSY -  
Urban



SMOOTH MATT -  
Urban

### ARDAL: nominal thickness of external skin 11 mm

· Façade weight: 25 kg/m<sup>2</sup> (+9,8 kg/m<sup>2</sup> to -3,7 kg m<sup>2</sup> following the aspects)

### ACANTHA: nominal thickness of external skin 14 mm

· Façade weight: 31,5 kg/m<sup>2</sup> (+2,7 kg/m<sup>2</sup> to -2,4 kg m<sup>2</sup> following the aspects)

### Textured ACANTHA: nominal thickness of external skin 16 mm

· Façade weight: 32,5 kg/m<sup>2</sup> (+8 kg/m<sup>2</sup> to -3,4 kg m<sup>2</sup> following the aspects)

### ARMADA: nominal thickness of external skin 21 mm

· Façade for exposed ground floor, smooth to strongly structured appearance of surface.

· Façade: weight 45,5 kg/m<sup>2</sup> (+7,5 kg/m<sup>2</sup> to -12 kg m<sup>2</sup> following the aspects)

See  
colours

P27





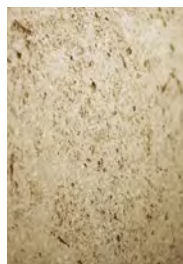
# CAREA Grooved: Our aspects

STANDARD AND BESPOKE ASPECTS  
AND FORMATS (WxH in cm)

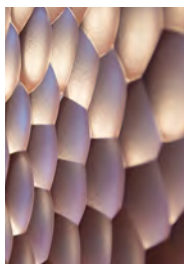
Standard : 3000 x 900 mm  
& sub-multiples.  
Bespoke thickness possible



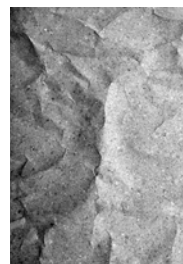
ACANTHA 14-16 mm



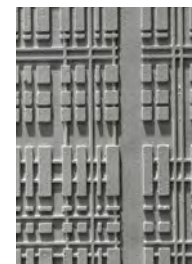
SHELL -  
Mineral



MOON -  
Organic



RHODES -  
Organic



URBA -  
Urban



RIVEN -  
Mineral



GLOSSY -  
Urban



SMOOTH MATT -  
Urban



TAÏGA -  
Graphic

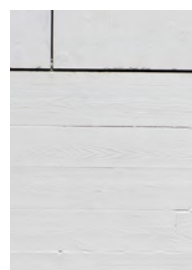


PAPYRUS -  
Organic

## STANDARD AND BESPOKE FORMATS



FLUTED -  
Graphic  
Max.:  
1270 x 600 mm



WOOD -  
Organic  
Max.:  
2379 x 900 mm



GLASS PASTE -  
Organic  
Max.:  
1560 x 660 mm



See  
colours  
P27

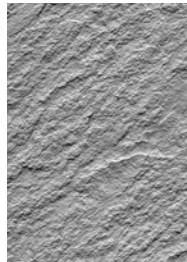
# CAREA Grooved: Our aspects

STANDARD AND BESPOKE ASPECTS  
AND FORMATS (WxH in cm)

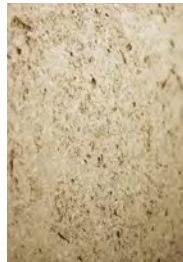


ARMADA 21 mm

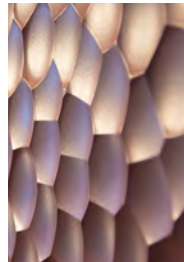
Standard : 3000 x 600 mm  
& sub-multiples.  
Bespoke thickness possible



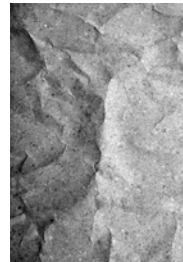
RIVEN -  
Mineral



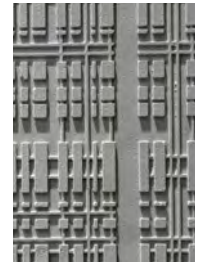
SHELL -  
Mineral



MOON -  
Organic



RHODES -  
Organic



URBA -  
Urban



GLOSSY -  
Urban



SMOOTH MATT -  
Urban



TAÏGA -  
Graphic



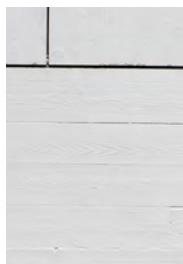
PAPYRUS -  
Organic

## STANDARD AND BESPOKE FORMATS



FLUTED -  
Graphic

Max. :  
1270 x 600 mm



WOOD -  
Organic

Max. :  
2379 x 600 mm



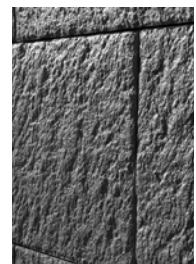
GLASS PASTE -  
Organic

Max. :  
1560 x 660 mm



SCHISTE -  
Mineral

595 x 245 mm  
495 x 495 mm  
745 x 495 mm  
995 x 495 mm



CAUCASE -  
Mineral

595 x 495 mm  
495 x 395 mm

See  
colours

P27







# CAREA Grooved: Support systems

## CAREA Horizontal Grooved

## CAREA Vertical Grooved

### Concrete / Masonry



### COB/CLT : Timber backed construction



EUROCLASS A2-s1, d0

Installation systems	Support wall					
	Masonry Concrete	TSB Timber Structure Building	CLT Cross Laminated Timber	Fire safety	Q4	Earthquake
CAREA <sup>®</sup> Grooved	CWB CWoB	CWB	CWB	✓ EUROCLASS A2-s1,d0 *Except Armada	✓	✓

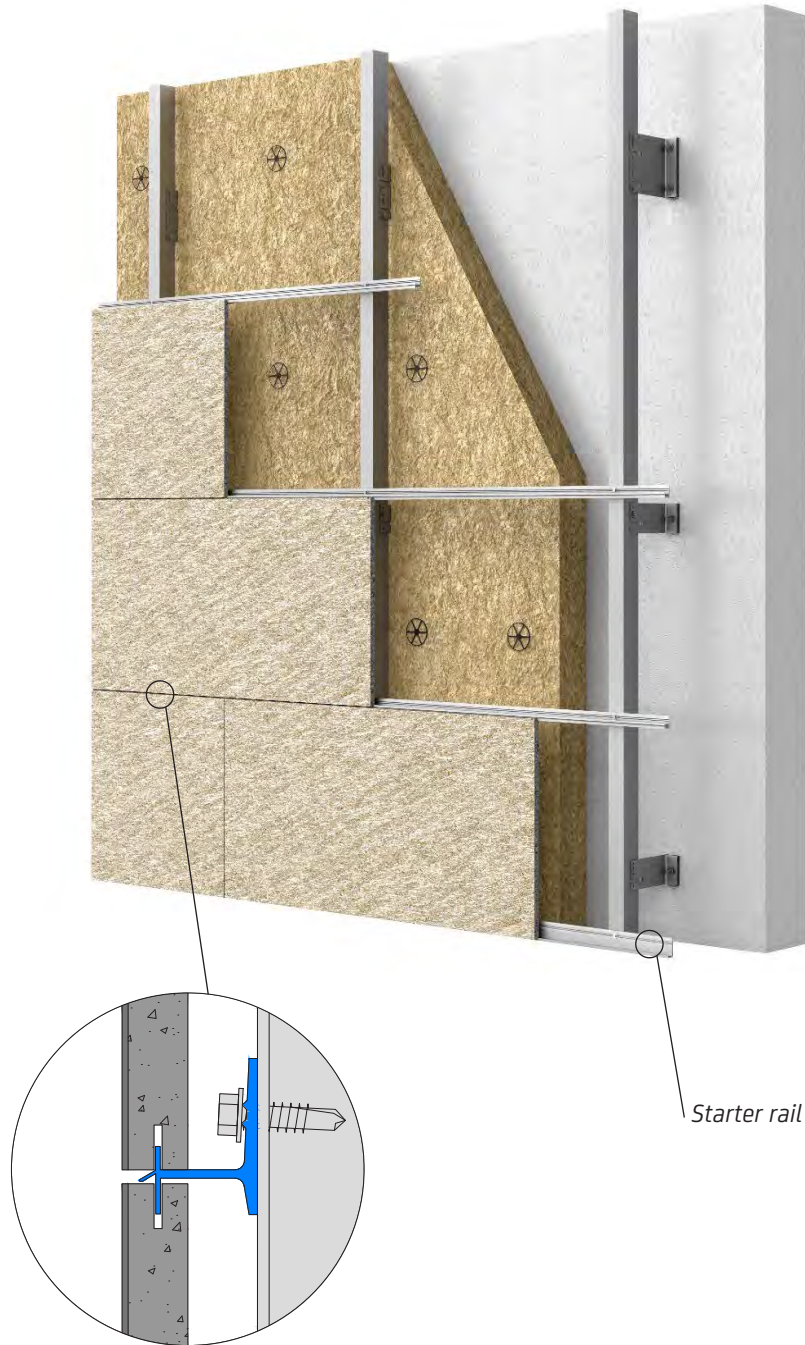
**CWB** : Cladding with backing structure

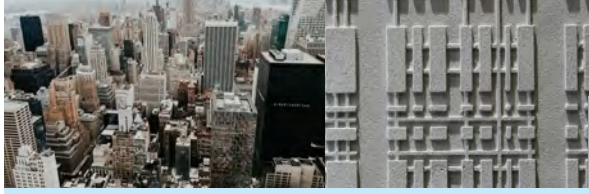
**CWoB** : Cladding without backing structure

# CAREA Grooved: Installation systems



## **CWB** (Cladding with backing structure) CAREA Horizontal Grooved





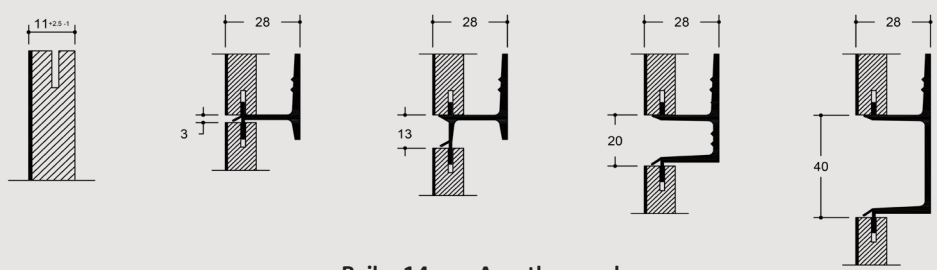
# CAREA Grooved: System thicknesses

## CWB (Cladding with backing structure)

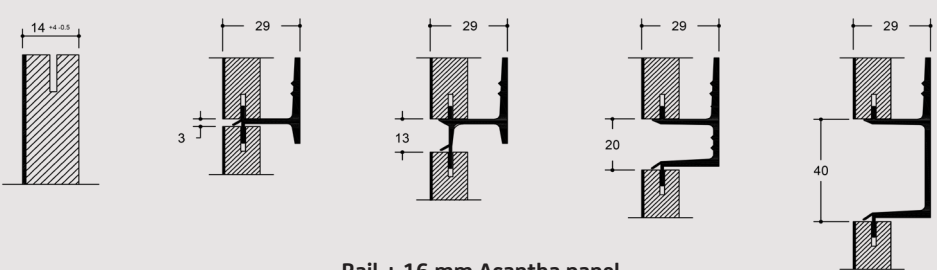
### CAREA Horizontal Grooved

#### Horizontal join

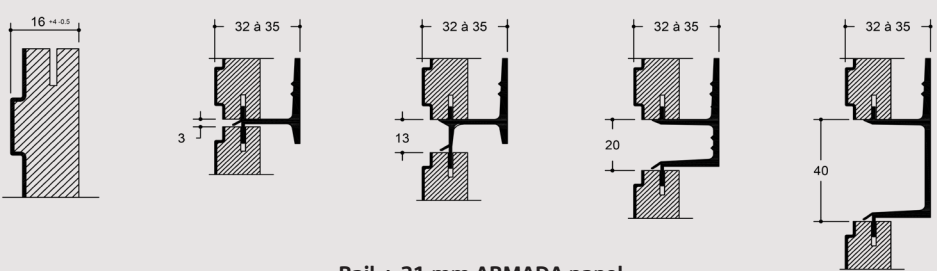
##### Rail + 11 mm Ardal panel



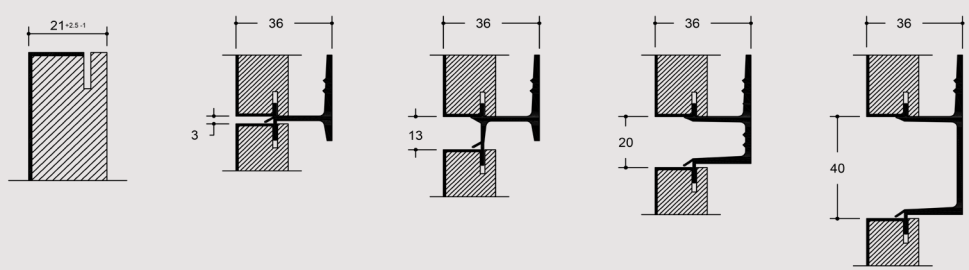
##### Rail + 14 mm Acantha panel



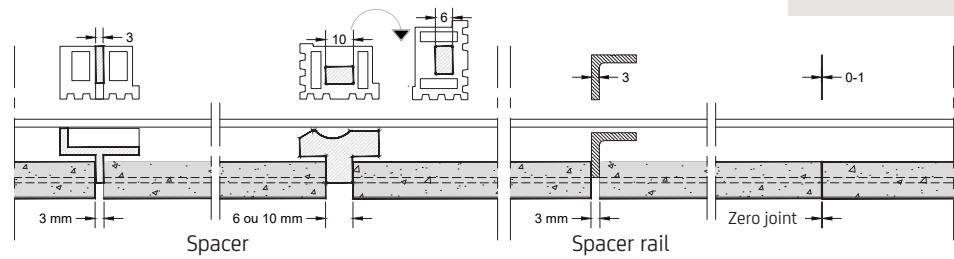
##### Rail + 16 mm Acantha panel



##### Rail + 21 mm ARMADA panel



#### Vertical joint



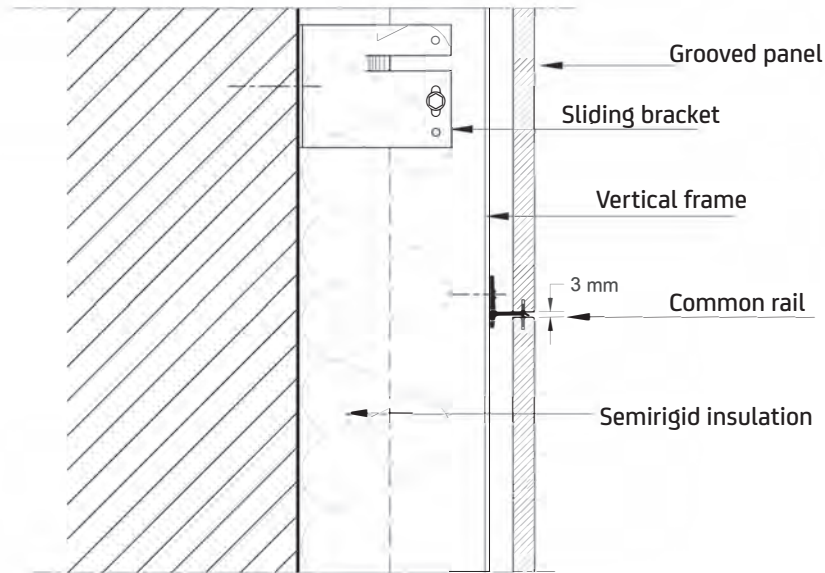
Powder coating on rails on demand

# CAREA Grooved: Principle cross sections

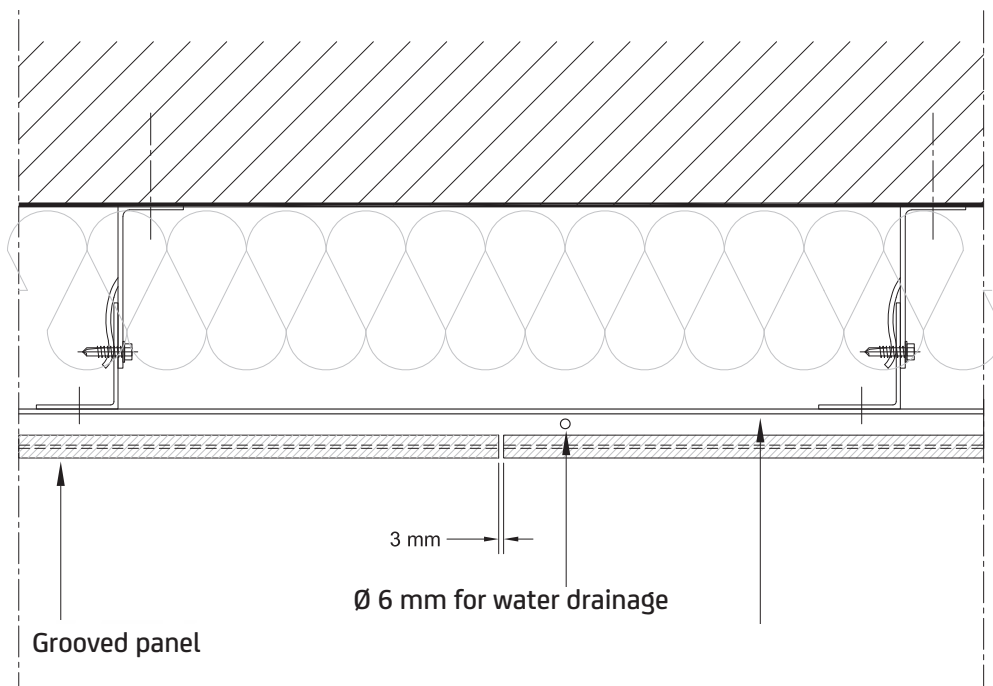


## CWB<sup>CAREA</sup> (Cladding with backing structure)

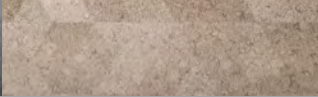
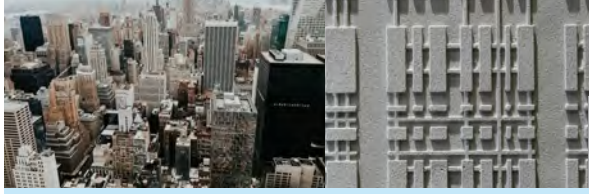
### CAREA Horizontal Grooved



Vertical section



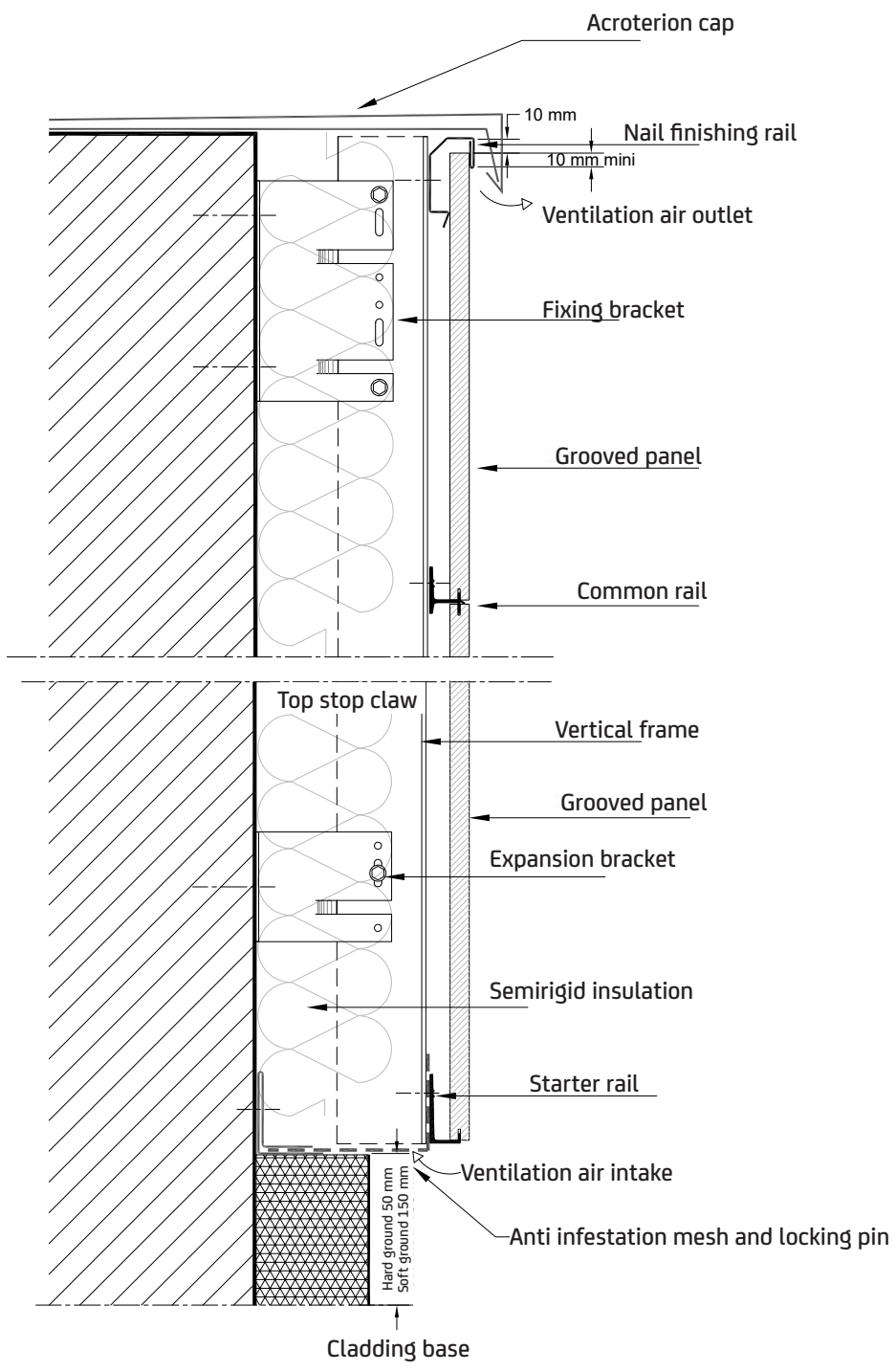
Horizontal section



# CAREA Grooved: Starting points

**CWB** (Cladding with backing structure)

**CAREA Horizontal Grooved**

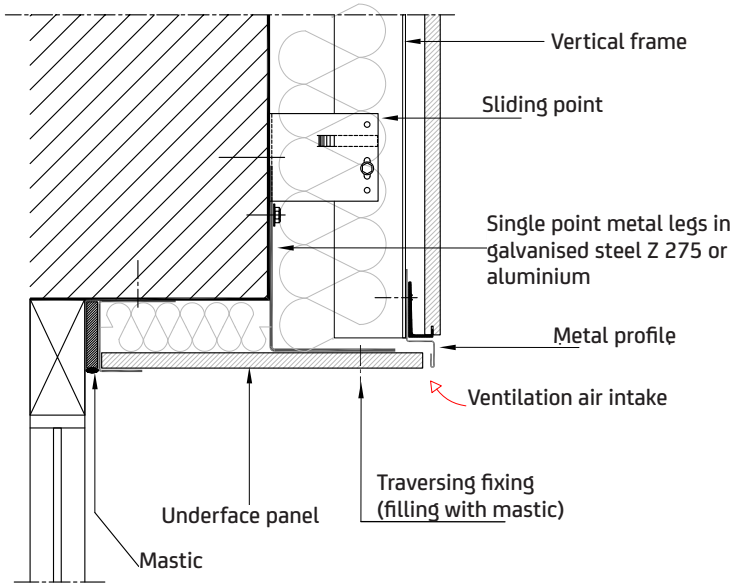


# CAREA Grooved: Openings

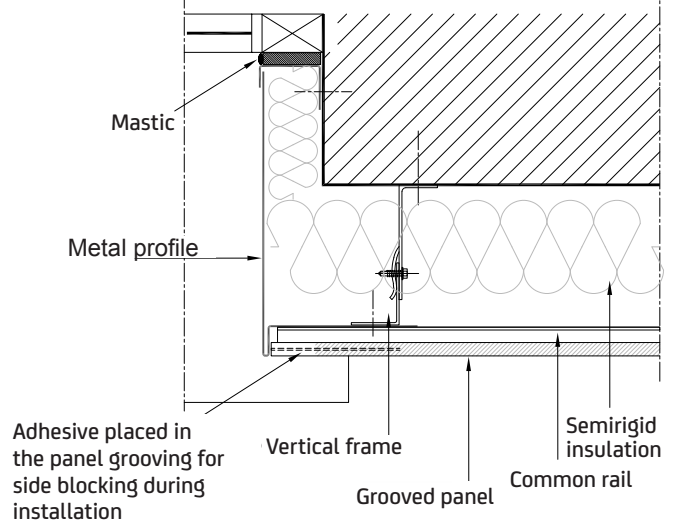
## CWB (Cladding with backing structure)

### CAREA Horizontal Grooved

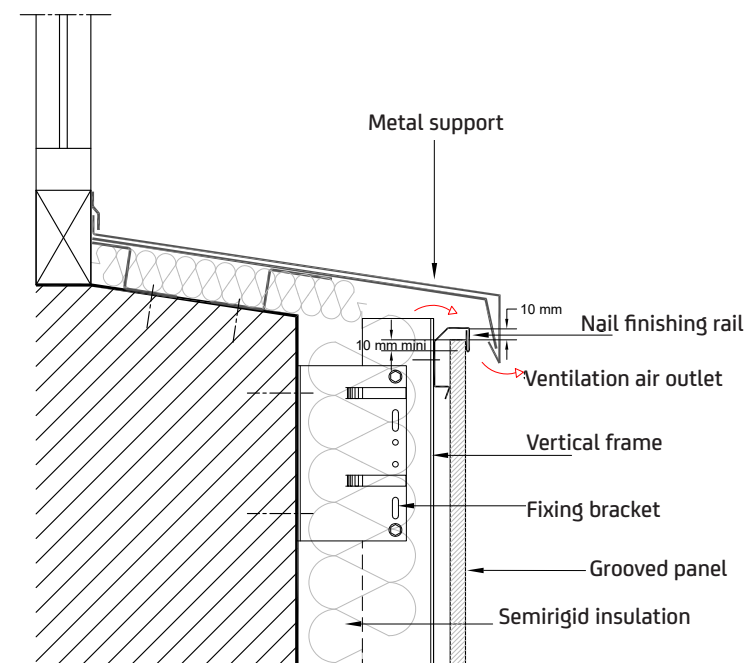
Lintel section



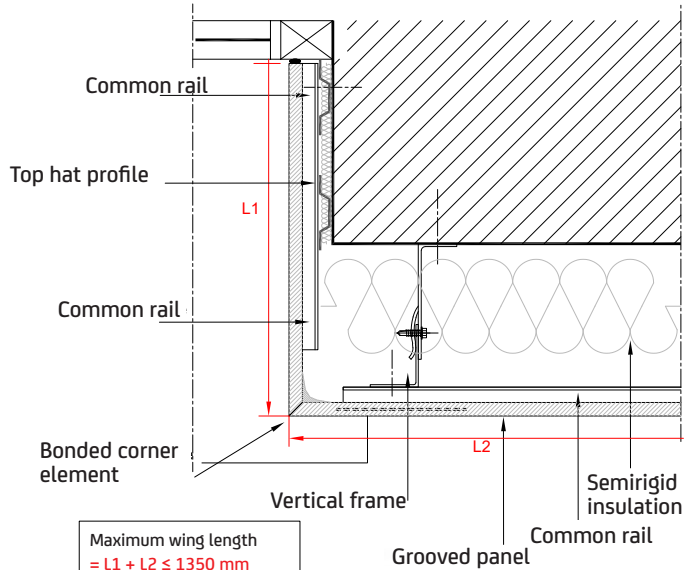
Insulated panel metal profile section



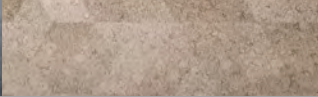
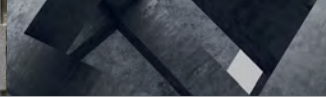
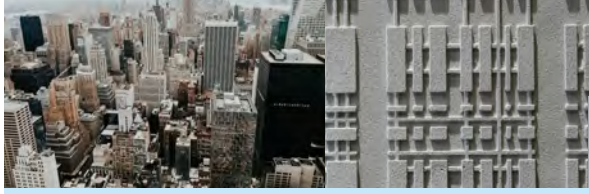
Support section



Cross-section of bonded corner



Maximum wing length  
=  $L1 + L2 \leq 1350 \text{ mm}$   
Minimum wing length =  
 $L2 \text{ min} \geq 100 \text{ mm}$

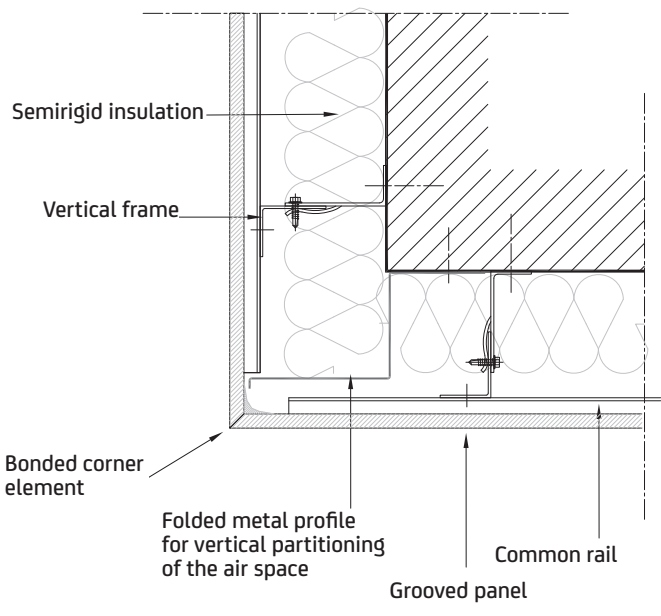


# CAREA Grooved: Special zones/corners

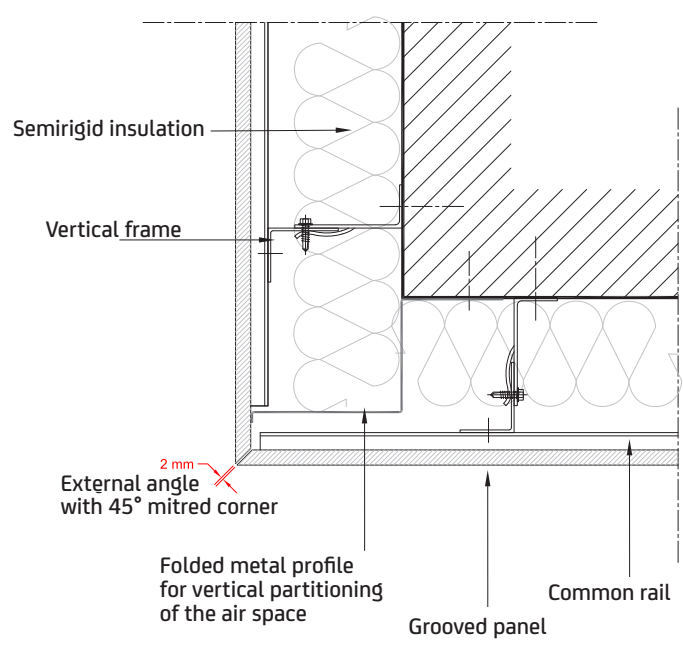
## CWB (Cladding with backing structure)

### CAREA Horizontal Grooved

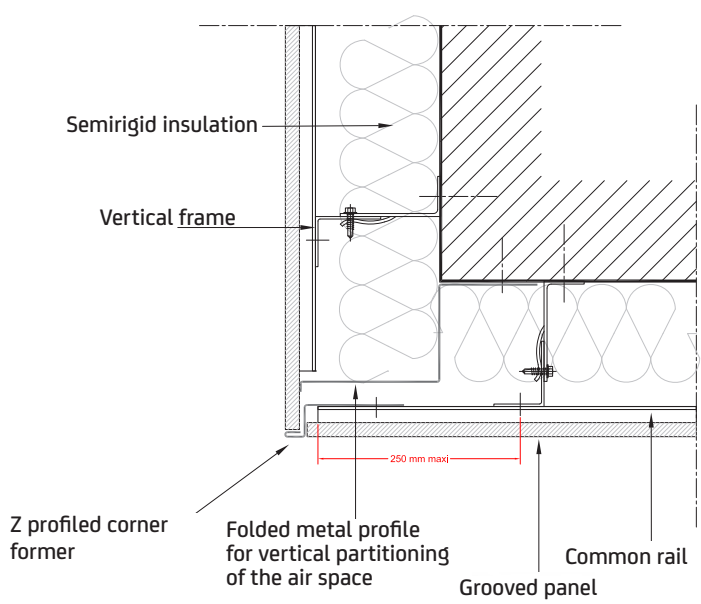
Bonded external corner



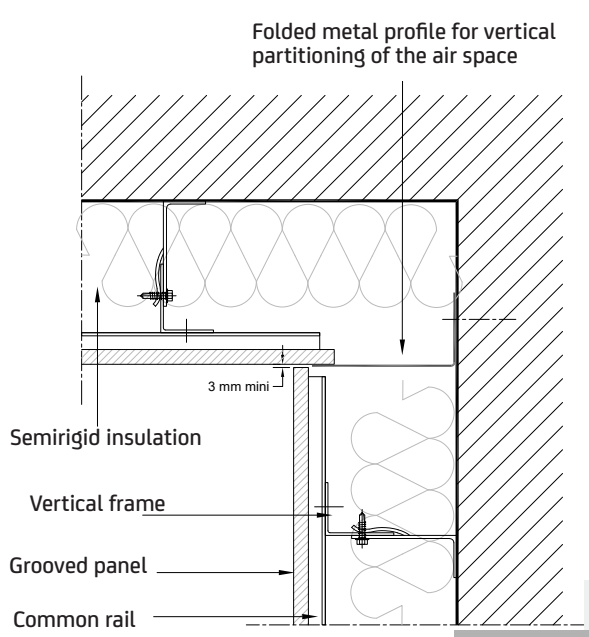
External mitred corner



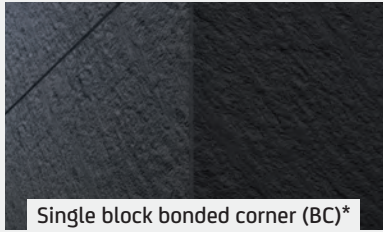
External corner with metal profile



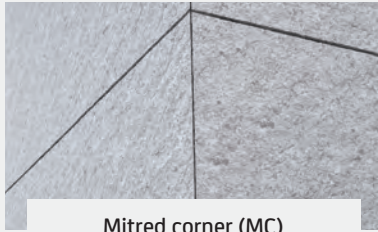
Internal corner



# CAREA Grooved: Special zones/corners



Single block bonded corner (BC)\*  
\*Made by the company on site



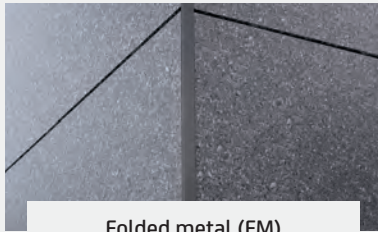
Mitred corner (MC)



Treated bevelled cut (TBC)



Moulded bevelled cut (MBC)



Folded metal (FM)



Chamfer treated (CT)

	Aspect	Panels size LxH (mm)	FM	BC	MC	CT Except 1200x600	
ARDAL 11 mm	SMOOTH MATT	1200x600	✓	✓	✓	✓	
		900 x 900					
	GLOSSY	900 x 600	✓	✓	✓	✓	
		900 x 550					
		900 x 500					
		900 x 450					
	SHELL	900 x 300	✓	✓	✓	✓	
900 x 200							
600 x 900							
RIVEN	600 x 900	✓	✓	✓	✓		
	600 x 600						
	600 x 400						
	600 x 300						
MECA	600 x 250	✓	✓	✓	✓		
		600 x 200	✓	✓	✓		
		900 x 900	✓	✓	✓		
	Aspect	Panels size LxH (mm)	FM	BC	MC	MBC	TBC
ACANTHA 14 - 16 mm	SMOOTH MATT	3000x900 max.	✓	✓	✓	✓	✓
	GLOSSY		✓	✓	✓	✓	✓
	RIVEN		✓	✓	✓		✓
	RHODES		✓				✓
	PAPYRUS		✓				✓
	URBA		✓				✓
	MOON		✓				✓
	TAIGA		✓				✓
	SHELL		✓	✓	✓		
	FLUTED		✓				✓
	GLASS PASTE		✓				✓
	WOOD		✓				✓
	ARMADA 21 mm		SCHISTE	250x250	✓	✓	✓
500x500							
750x500							
CAUCASE	1000x500	✓				✓	
SMOOTH MATT	400x500	✓	✓	✓	✓		
	600x500						
	900x300	✓	✓	✓	✓		
	LINEA LISTON TORUS						





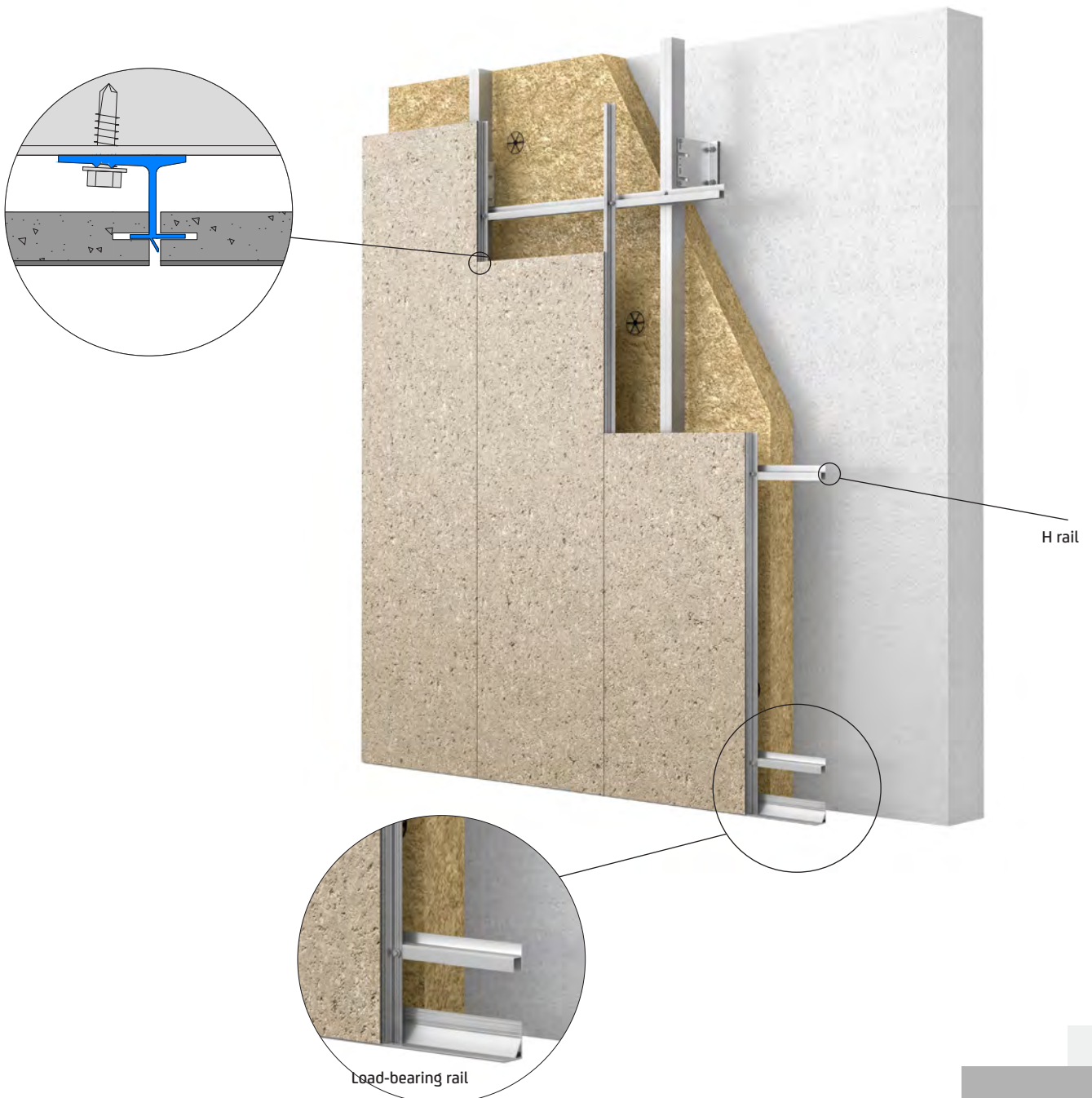
# CAREA Grooved: Installation systems

CAREA<sup>®</sup>  
MINERAL COMPOSITE

41

**CWB** (Cladding with backing structure)

CAREA Horizontal Grooved



# CAREA Grooved: Zero vertical joint installation

## Authorised stacked heights:

For vertical installation:  
the supporting rail design allows for **variable panel heights depending on panel weight.**

Technical Approval 2/14-1659 **authorises the support of:**

- 3.00 m of ARMADA at 50 Kg/m<sup>2</sup>
- 4.60 m of ACANTHA between 36 and 43 kg/m<sup>2</sup>
- 5.90 m of ARDAL at 26 kg/m<sup>2</sup>.





# CAREA Grooved: System thicknesses

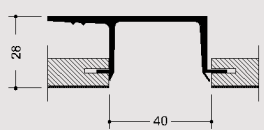
**CWB**

(Cladding with backing structure)

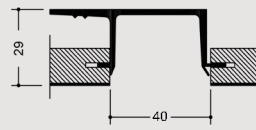
**CAREA Vertical Grooved**

Vertical joint

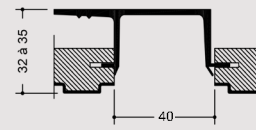
Rail + 11 mm Ardal panel



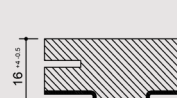
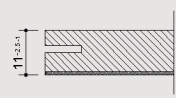
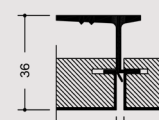
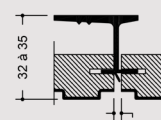
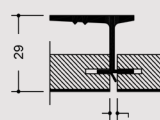
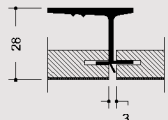
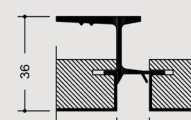
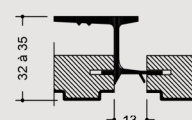
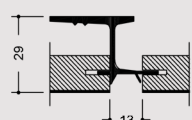
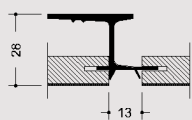
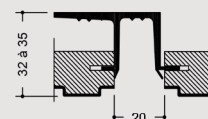
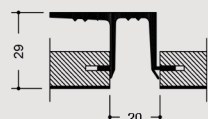
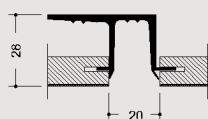
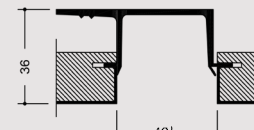
Rail + 14 mm Acantha panel



Rail + 16 mm Acantha panel

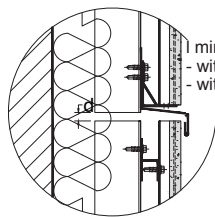
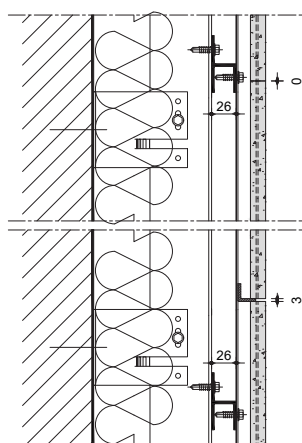


Rail + 21 mm ARMADA panel

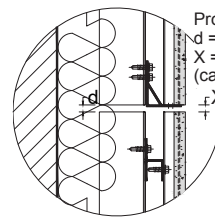


Powder coating on rails on demand

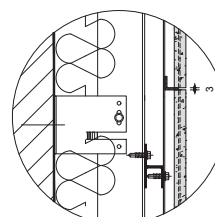
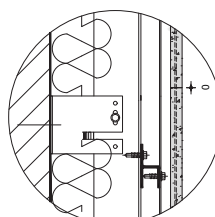
Horizontal joint



minimum length:  
with a 3m rail, l = 6 mm  
with a 6m rail, l = 12 mm



Profile 5 m(h)maxi =  
d = 10mm  
X = d = 10 mm maxi  
(case without flap)



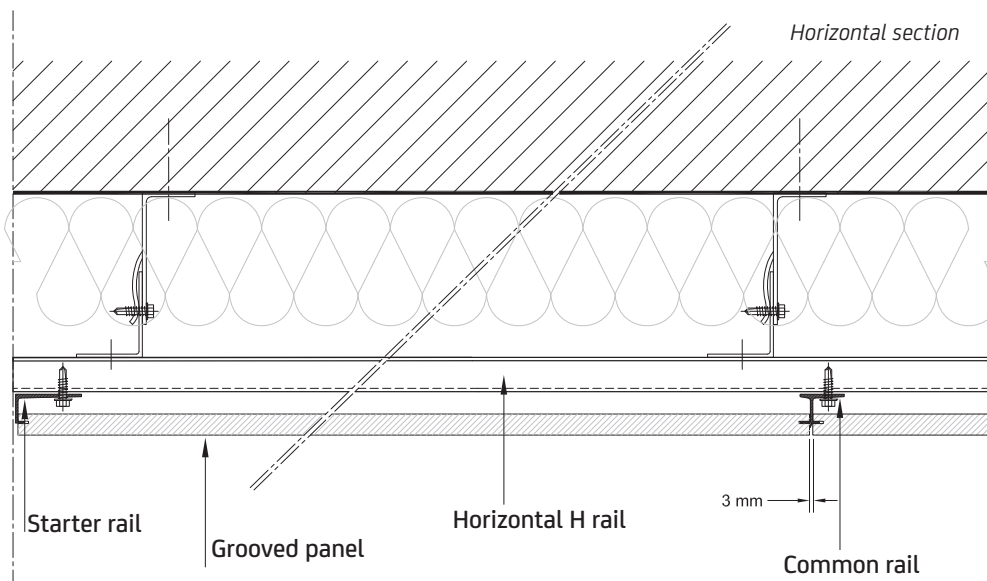
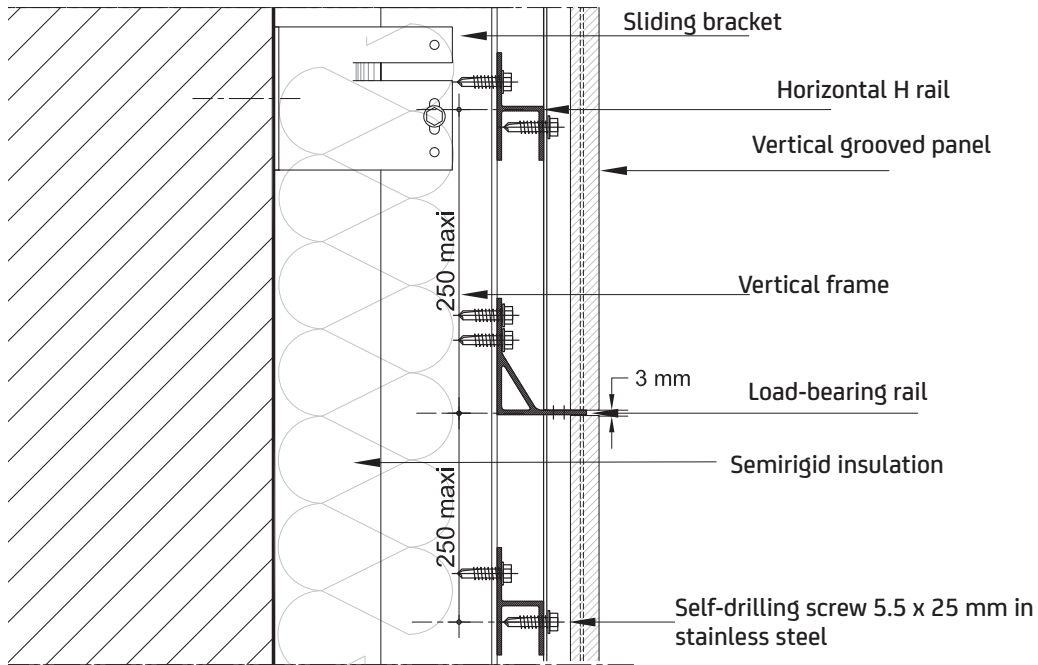
# CAREA Grooved: Principle cross sections



## CWB<sup>CAREA</sup> (Cladding with backing structure)

### CAREA Vertical Grooved

Vertical section

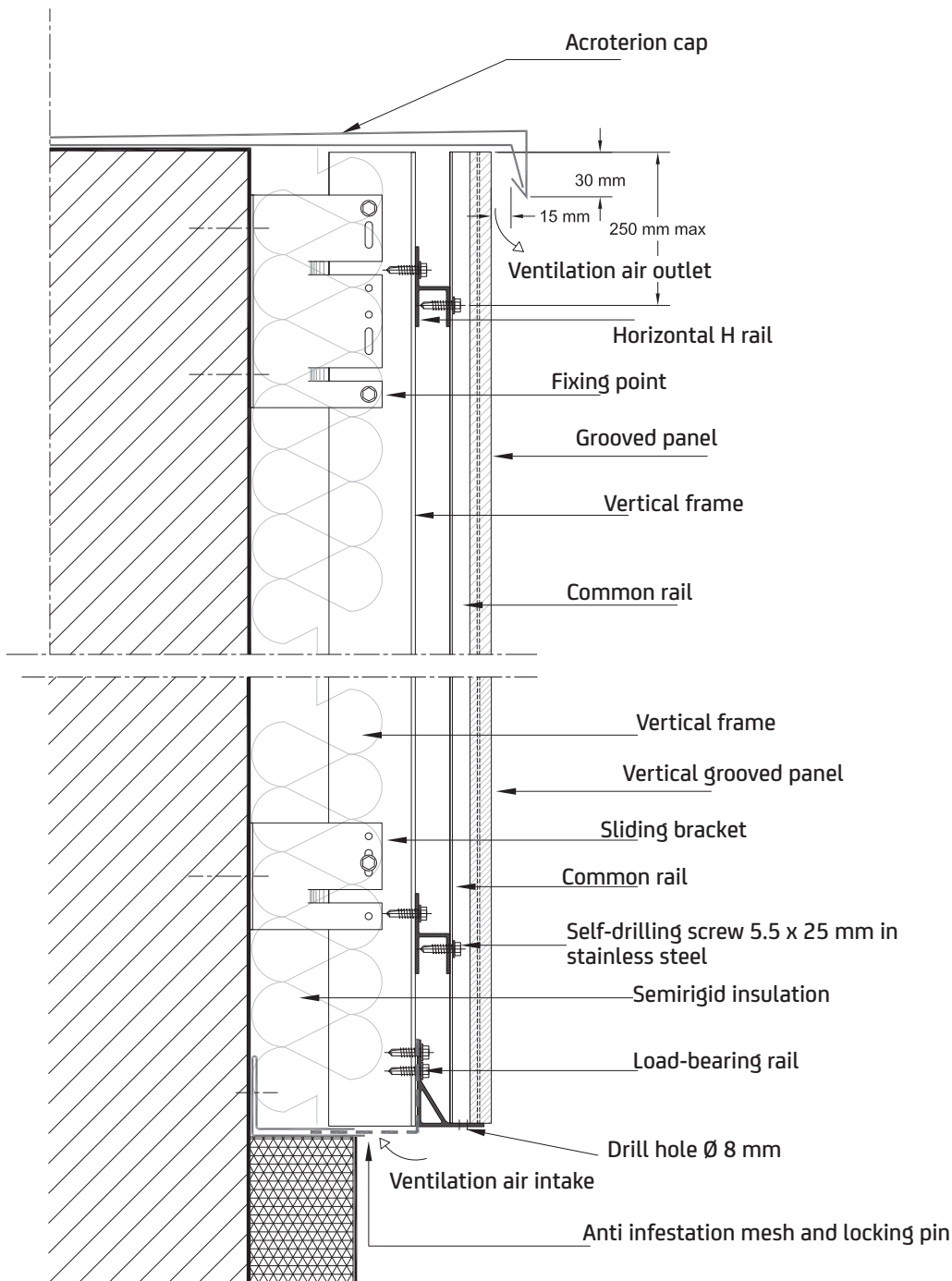




# CAREA Grooved: Starting points

## CWB (Cladding with backing structure)

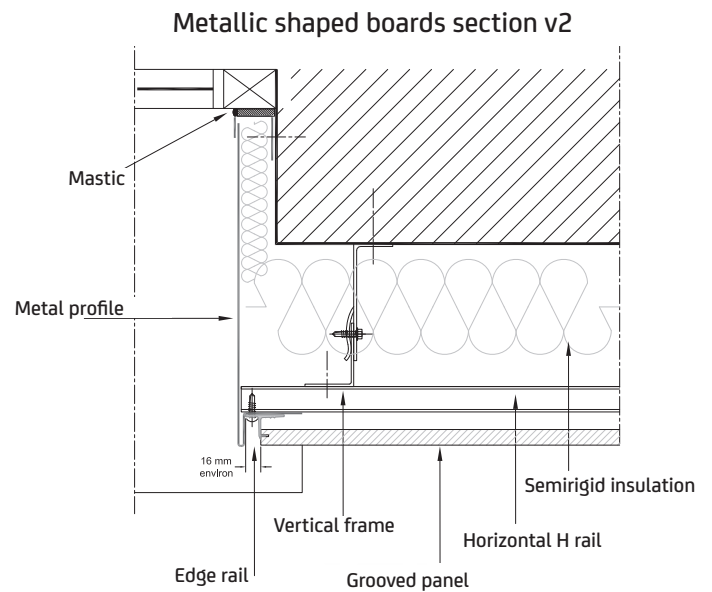
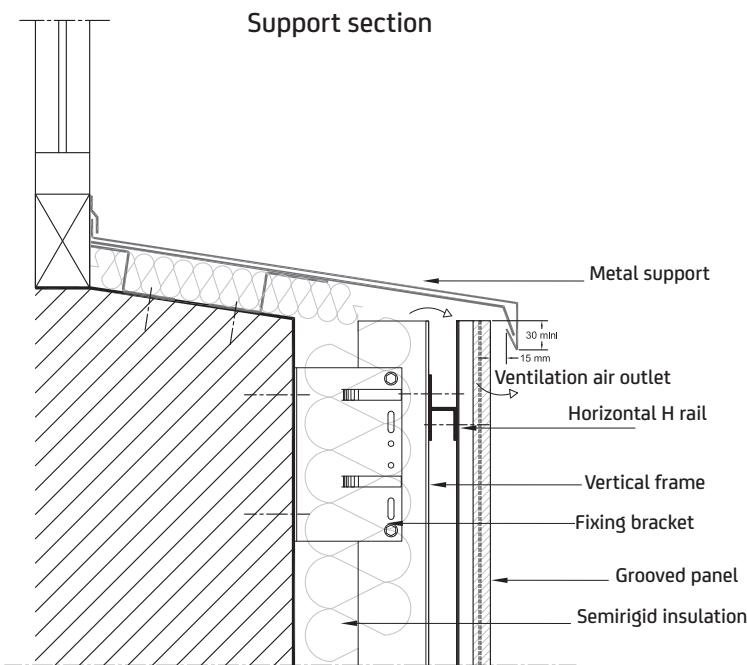
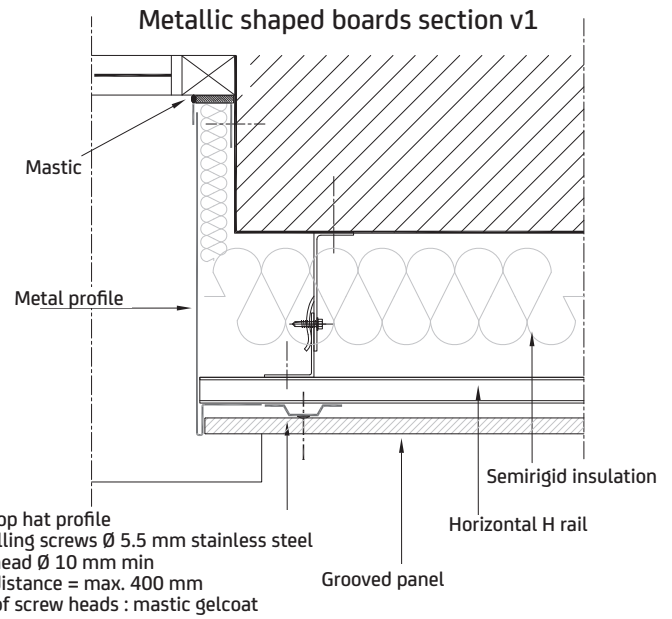
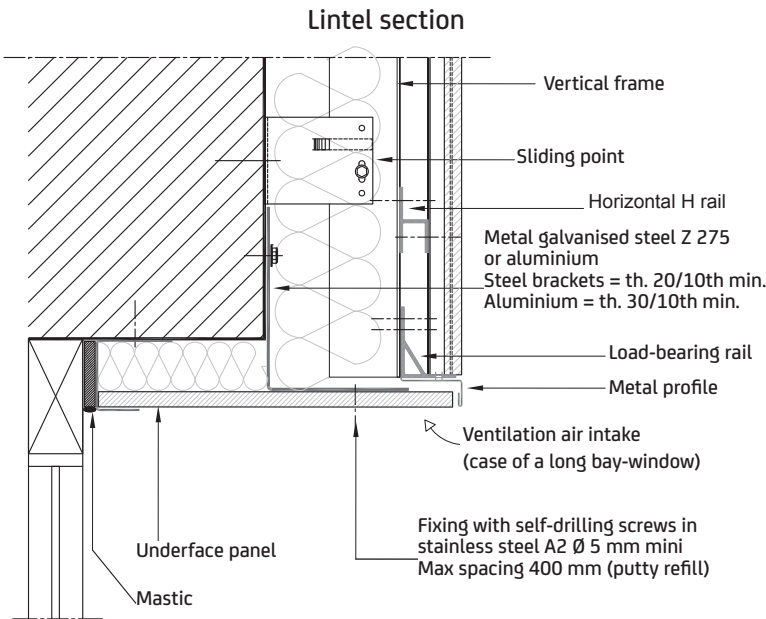
### CAREA Vertical Grooved

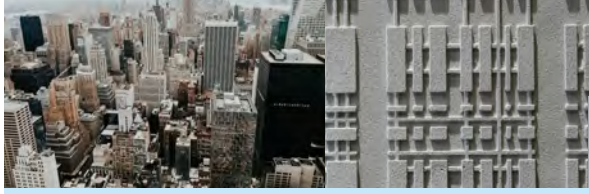


# CAREA Grooved: Openings

## CWB (Cladding with backing structure)

### CAREA Vertical Grooved

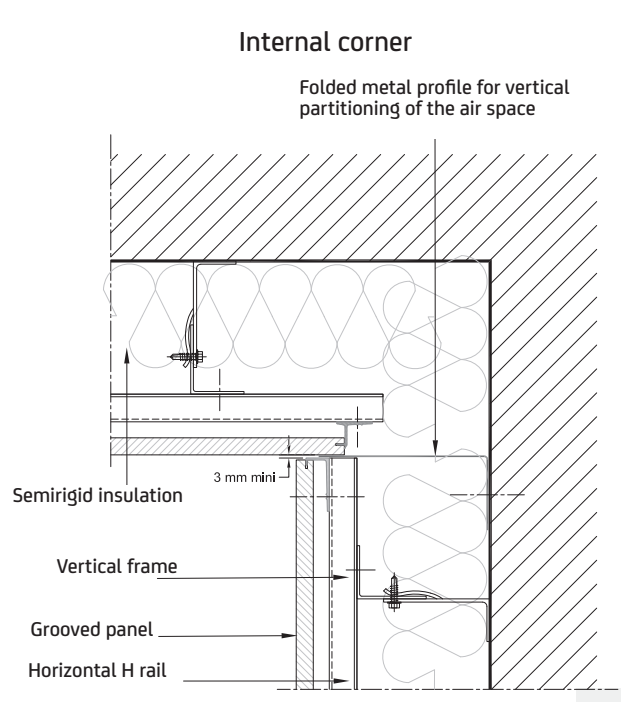
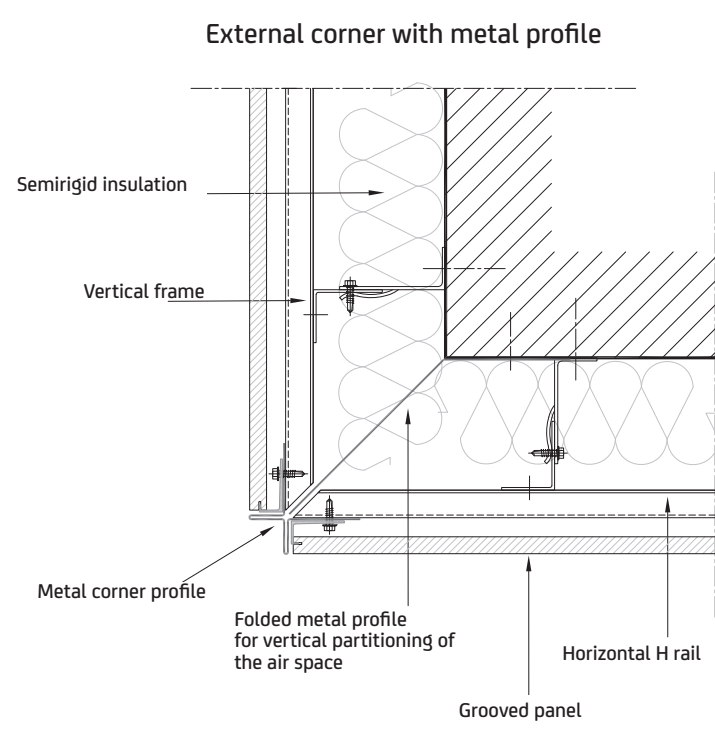
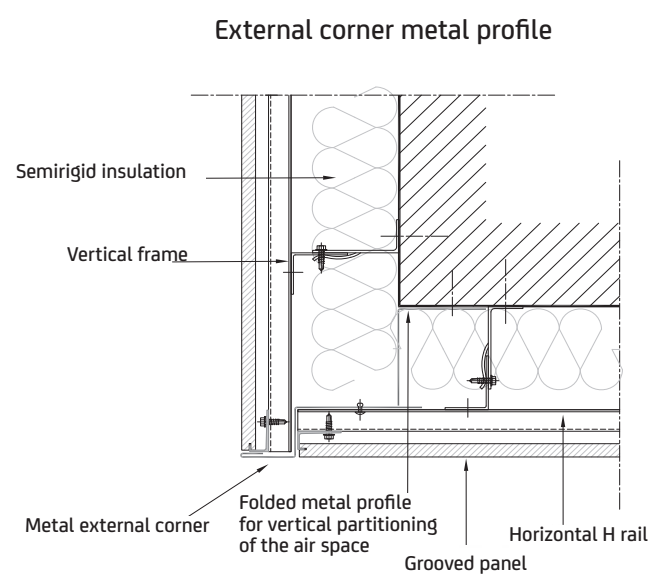
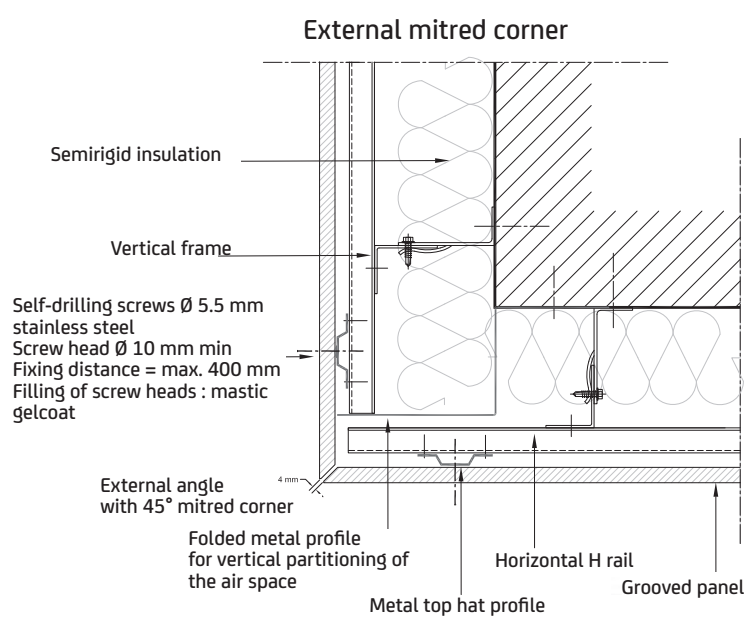




# CAREA Grooved: Special zones/corners

## CWB (Cladding with backing structure)

### CAREA Vertical Grooved



# CAREA Anchor facing: Our aspects

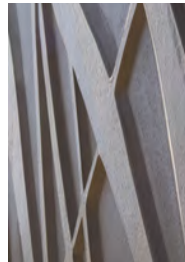
ASPECTS & FORMATS (WxH in cm)

**ARTEMA:**

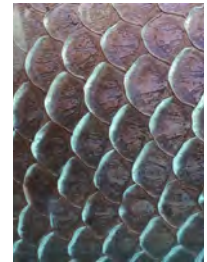
Weight: 37 to 43 kg/m<sup>2</sup> following the aspects

## ASPECTS (bespoke aspect creation, contact us)

ARTEMA



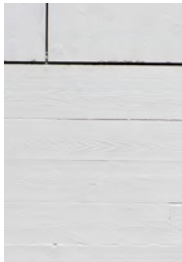
VEGETAL -  
Organic  
2400x994



CAREA DesignLab suggestion

 Créer votre aspect

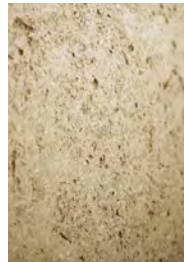
ARTEMA CURVE



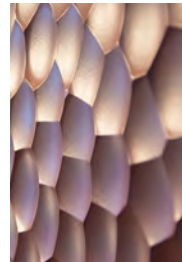
WOOD -  
Organic



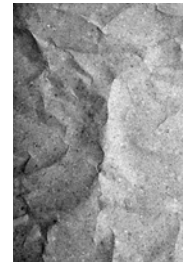
TAÏGA -  
Graphic



SHELL -  
Mineral



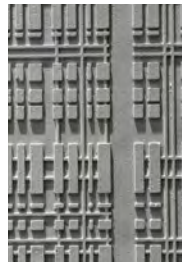
MOON -  
Organic



RHODES -  
Organic



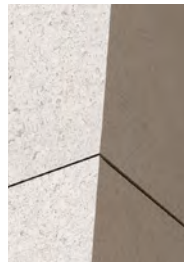
RIVEN -  
Mineral



URBA -  
Urban



GLOSSY -  
Urban



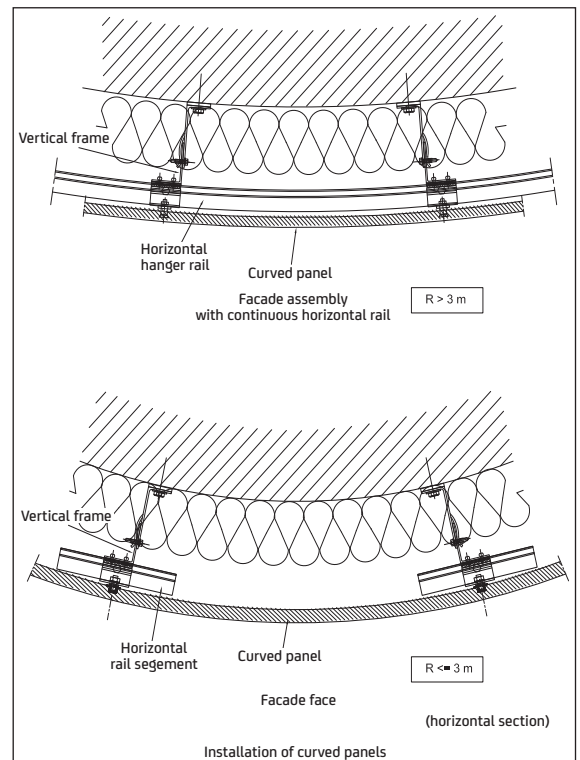
SMOOTH MATT -  
Urban

Concave/Convex,  
possibility of bespoke part  
studies.

Max. formats:  
2400 x 994 mm  
& sub-multiples



PAPYRUS -  
Organic



See  
colours

P27







# CAREA Anchor facing: Support systems

## Concrete / Masonry



CAREA anchor facing curve

## COB/CLT : Cross Laminated Timber



CAREA anchor facing curve

**EUROCLASS A2-s1, d0**

Installation systems  
**CAREA<sup>®</sup> Insert**

Support wall					
Masonry Concrete	TSB Timber Structure Building	CLT Cross Laminated Timber	Fire safety	Q4	Earthquake
<b>CWB</b>	<b>CWB</b>	<b>CWB</b>	✓ EUROCLASS A2-s1,d0 *Except Artema Q4	✓	✓

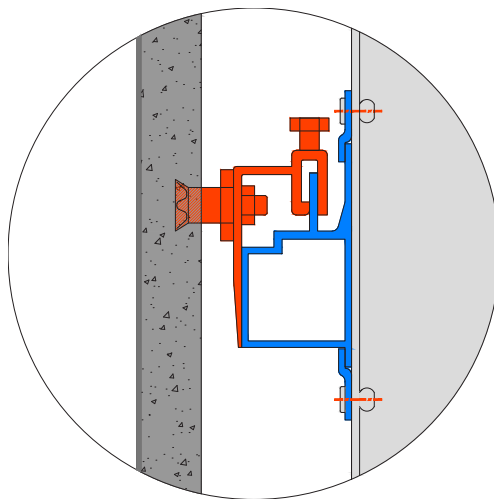
**CWB** : Cladding with backing structure

**CWob** : Cladding without backing structure

# CAREA Anchor facing: Installation systems

## **CWB** (Cladding with backing structure)

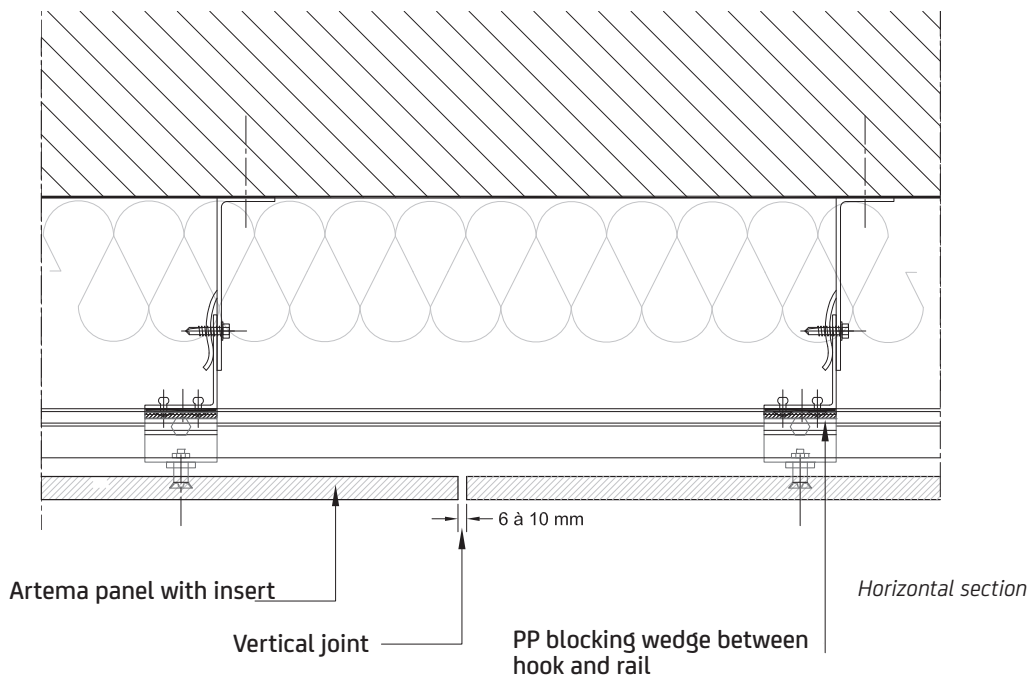
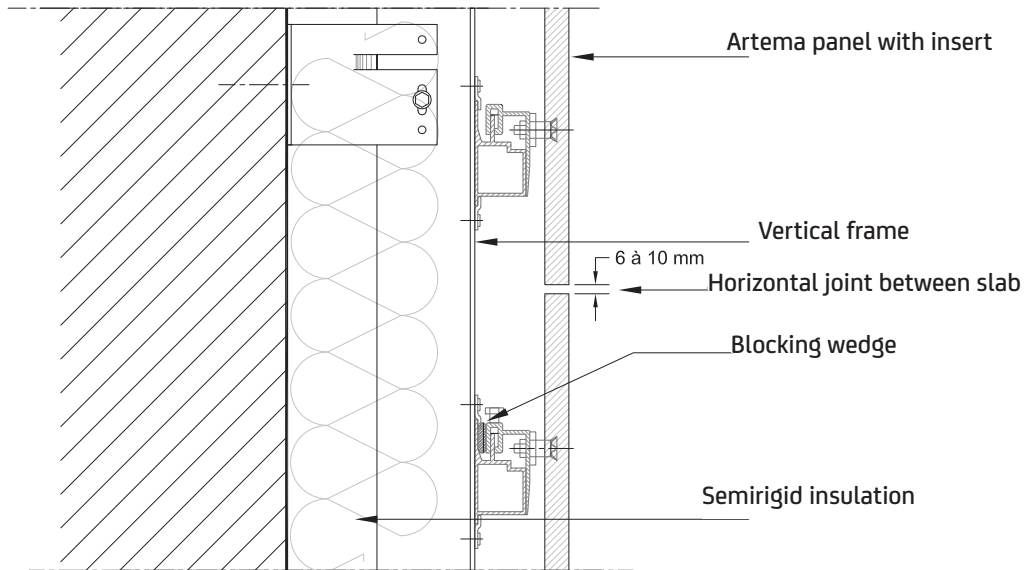
### CAREA Anchor facing



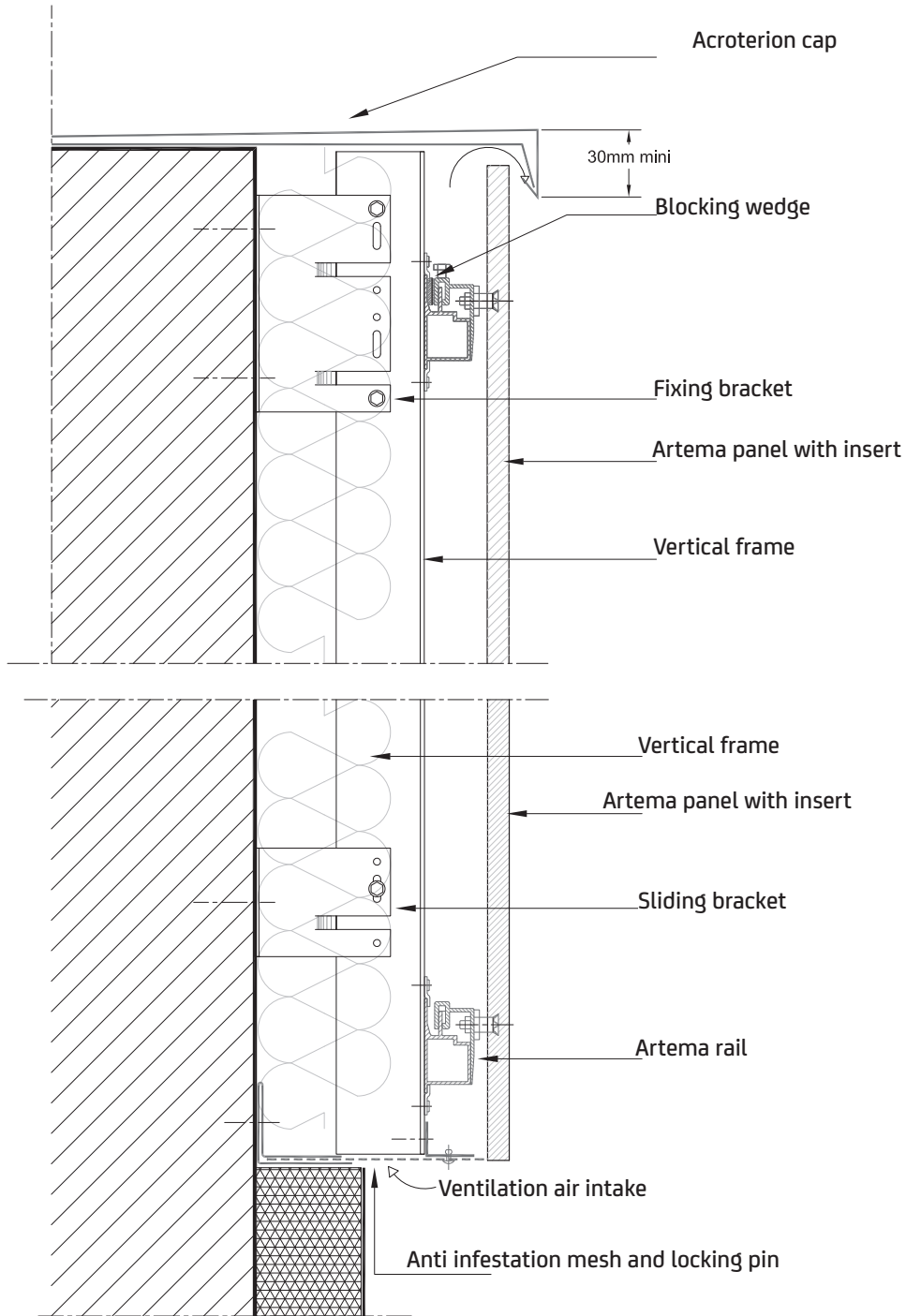


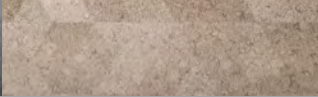
# CAREA Anchor facing: Principle cross sections

*Vertical section*



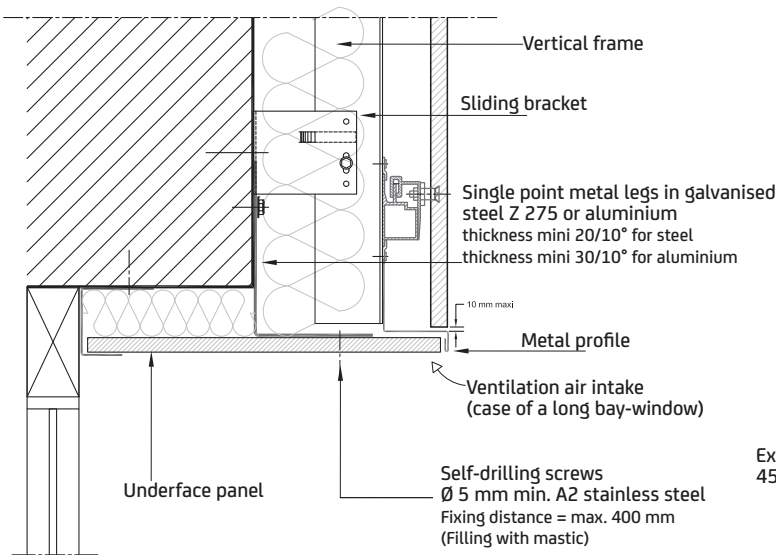
# CAREA Anchor facing: Starting points



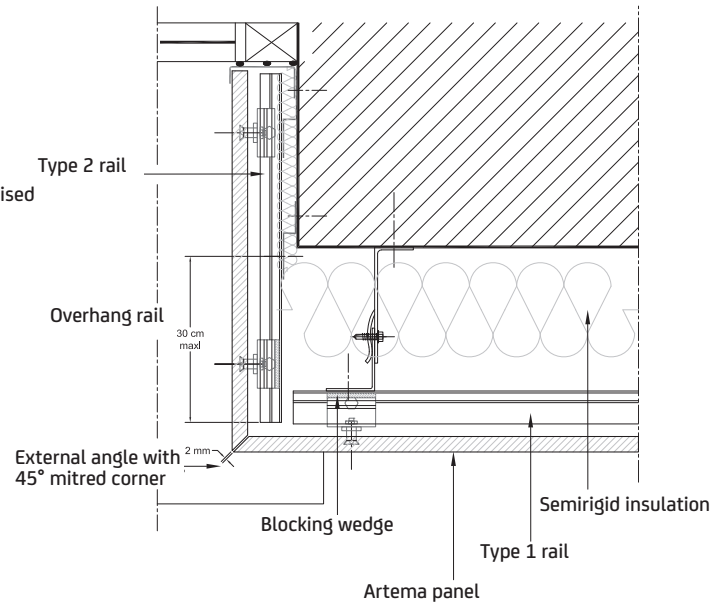


# CAREA Anchor facing: Openings

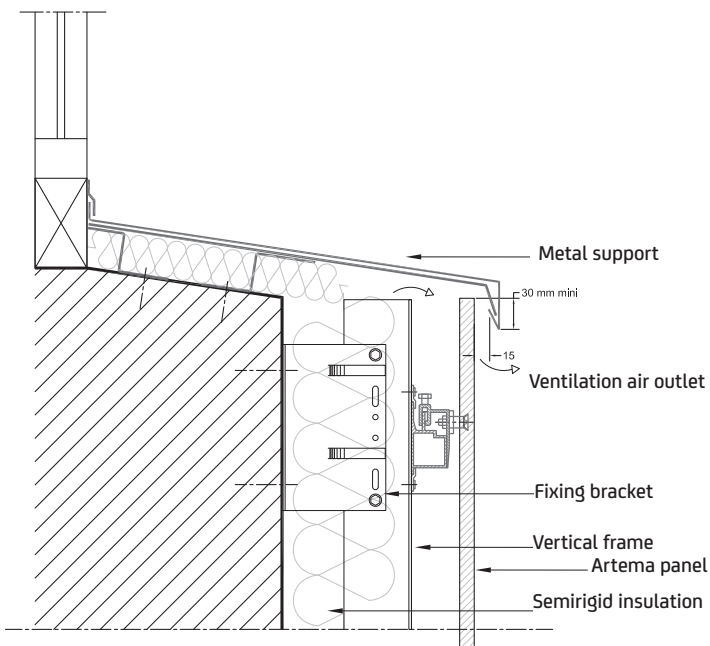
Lintel section



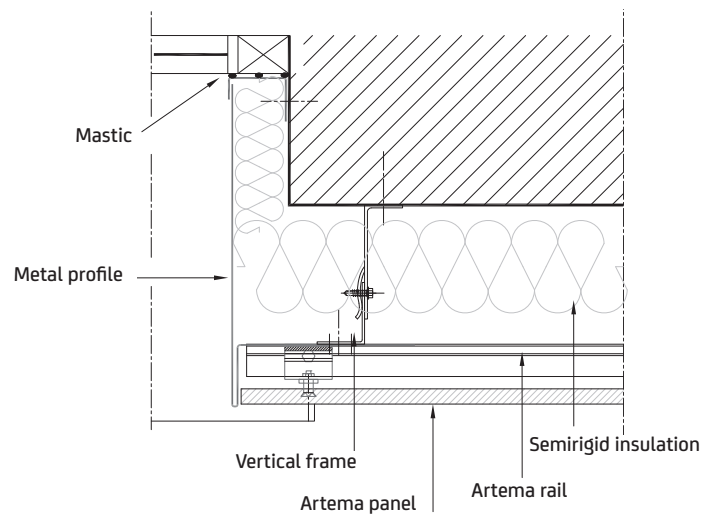
Mitred corner detail



Support section

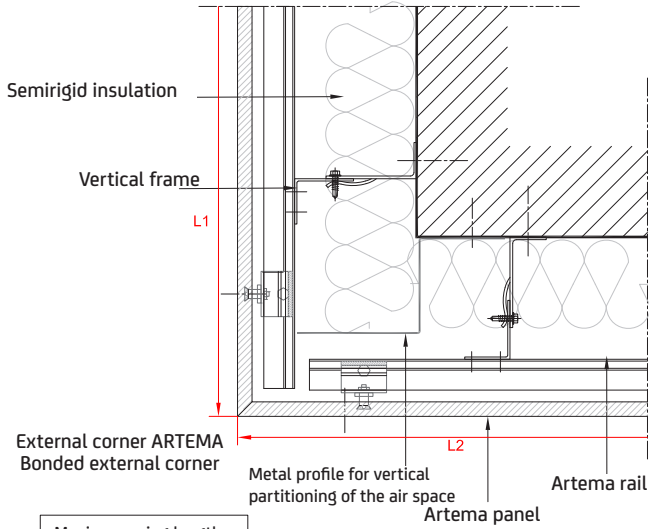


Metallic shaped boards section



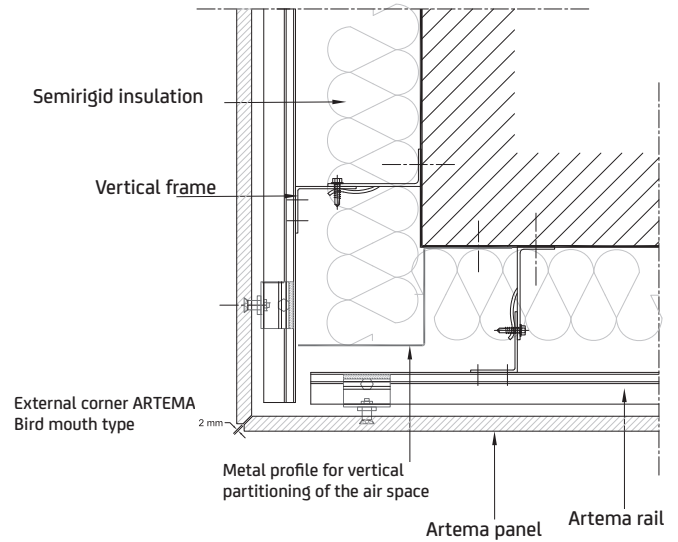
# CAREA Anchor facing: Special zones/corners

Glued-assembled external corner

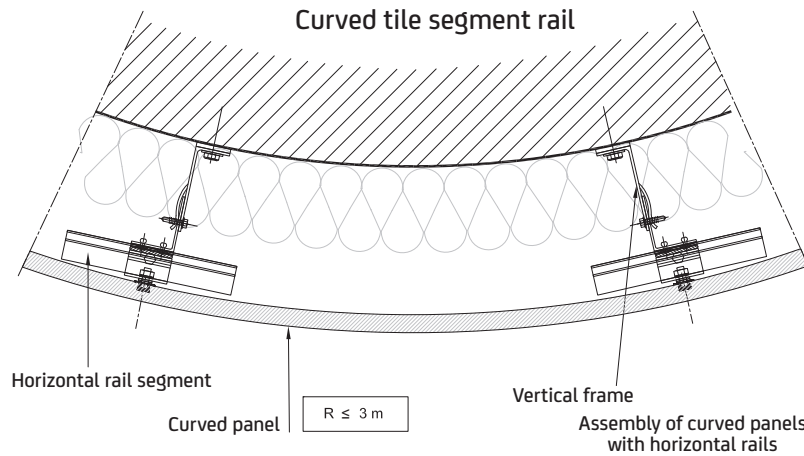


Maximum wing length =  
 $L1 + L2 \leq 1350 \text{ mm}$   
Minimum wing length =  
 $L2 \text{ min} \geq 100 \text{ mm}$

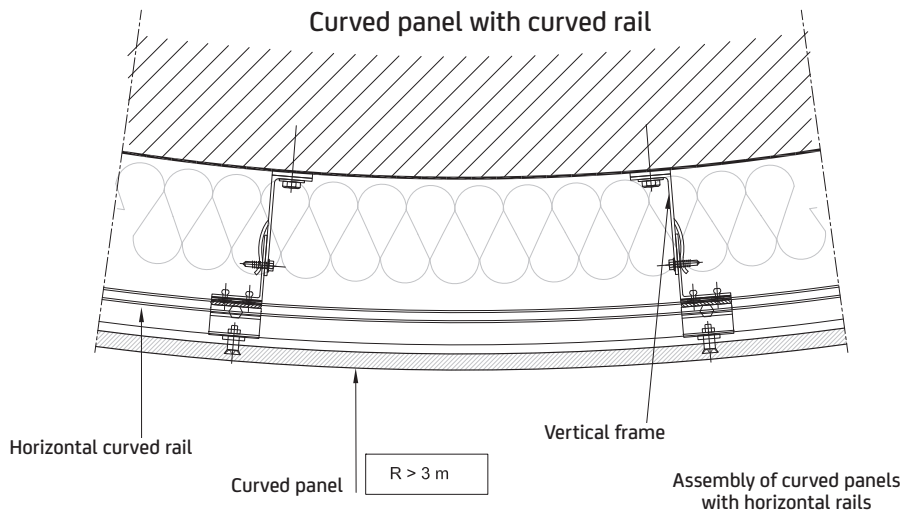
External corner birdmouth



Curved tile segment rail



Curved panel with curved rail





# CAREA Minéral Composite : Special zone synopsis

**CAREA®**  
MINERAL COMPOSITE

		CAREA Interlocking	CAREA Grooved	CAREA Anchor facing	CWB	CWoB	Masonry Support	Support Bois/Clt	Metal plate support	Q4 (Mechanical strength)
SMOOTH - Urban		✓			✓	✓	✓	✓	✓	✓
PIERRE DU SUD - Mineral		✓			✓	✓	✓	✓	✓	✓
PIERRE DE LOIRE - Mineral		✓			✓	✓	✓	✓	✓	✓
GRAF 100 - Graphic		✓			✓	✓	✓	✓	✓	✓
GRAF 200 - Graphic		✓			✓	✓	✓	✓	✓	✓
GRAF 900 - Mineral		✓			✓	✓	✓	✓	✓	✓
GRAF SLATE - Mineral		✓			✓	✓	✓	✓	✓	✓
DUNE - Organic		✓			✓	✓	✓	✓	✓	✓
CARVI - Urban		✓			✓	✓	✓	✓	✓	✓
PIXEL - Graphic		✓			✓	✓	✓	✓	✓	✓
MAGMA - Mineral		✓			✓	✓	✓	✓	✓	✓
MECA - Graphic			✓		✓	✓	✓	✓	✓	✓
RIVEN - Mineral			✓	✓	✓	✓	✓	✓	✓	✓
SHELL - Mineral			✓	✓	✓	✓	✓	✓	✓	✓
SMOOTH MATT - Urban			✓	✓	✓	✓	✓	✓	✓	✓
GLOSSY - Urban			✓	✓	✓	✓	✓	✓	✓	✓
PAPYRUS - Organic			✓	✓	✓	✓	✓	✓	✓	✓
RHODES - Organic			✓	✓	✓	✓	✓	✓	✓	✓
MOON - Organic			✓	✓	✓	✓	✓	✓	✓	✓
TAIGA - Graphic			✓	✓	✓	✓	✓	✓	✓	✓
URBA - Graphic			✓	✓	✓	✓	✓	✓	✓	✓
FLUTED - Graphic			✓	✓	✓	✓	✓	✓	✓	✓
GLASS PASTE - Graphic			✓	✓	✓	✓	✓	✓	✓	✓
WOOD - Organic			✓	✓	✓	✓	✓	✓	✓	✓
SCHISTE - Mineral			✓		✓	✓	✓	✓	✓	✓
CAUCASE - Mineral			✓		✓	✓	✓	✓	✓	✓
VEGETAL - Organic				✓	✓		✓	✓		✓

## # CAREA Minéral Composite : Technical support

## # Carea approved training centre

The Carea training centre is an approved training organisation for installation contractors, project managers and design offices. It provides new qualifications or strengthens and refreshes team know-how.

The modules last two days and can be given on our premises or on site, each one has a theory part and a hands-on part so that you can optimise your projects from the design phase through to completion. CAREA offers RIBA approved CPD presentations. Contact us for further information.

## # The Carea Design Office: Carea<sup>®</sup> Design Office

It guarantees that each customer using CAREA<sup>®</sup> solutions is personally accompanied in matters of standards and sustainable development, regulatory, standard and technical watch, and in the installation of the products.

## # Order form documents:

Request these documents to facilitate project preparation.

**SUPPLÉMENT DE BON DE COMMANDE BP (produits rainurés ou sur inserts)**

entrepris: \_\_\_\_\_  
 e facturatio: \_\_\_\_\_  
 e livratio: \_\_\_\_\_  
 chantier : \_\_\_\_\_  
 Contact: \_\_\_\_\_  
 chantier \_\_\_\_\_ suite chantier  oui  non  
 e prix \_\_\_\_\_  
 produit \_\_\_\_\_







**Diagramme :**  
 1 2  
 3 4 3 4  
 pose verticale pose horizontale

CADRE / BATIMENT	REPERE	PRODUIT	ASPECT	COLORIS n°	DIMENSIONS EN MM		QUANTITE	type de pose	Type de chants	Localisation du chant				m2
					HAUTEUR chants 1 et 3	LONGUEUR chants 2 et 4				1	2	3	4	



# # CAREA Minéral Composite : Regulatory summary

**CAREA<sup>®</sup>**  
MINERAL COMPOSITE

	ATEC Masonry support 	ATEC Support Bois (COB/CLT) 	ATEC Plate support 	Earthquake	Fire compliance	FDES 	Q4
CAREA Interlocking CWB <b>CWB<sup>inter</sup></b>	CAREA Interlocking Cladding	CAREA Interlocking Cladding	CAREA Interlocking Cladding Plate	✓	✓		✓
CAREA Interlocking CWoB <b>CWoB<sup>inter</sup></b>	CAREA Interlocking CWoB (Type V, Type G)	CAREA Interlocking CWoB (Type V, Type G)		✓	Without tab		✓
CAREA Grooved CWB <b>CWB<sup>gro</sup></b>	CAREA Grooved Horizontal Cladding CAREA Grooved Vertical Cladding	CAREA Grooved Horizontal Cladding CAREA Grooved Vertical Cladding	CAREA Grooved Cladding Plate	✓	✓		✓
CAREA Grooved CWoB <b>CWoB<sup>gro</sup></b>	CAREA Grooved Vêtage			✓	✓		✓
CAREA Anchor facing CWB <b>CWB<sup>anc</sup></b>	CAREA Anchor facing Artema	CAREA Anchor facing Artema		✓	✓		✓



**MINERAL**

Organic  
Urban  
Graphic

Mineral  
Organic  
Urban

**GRAPHIC**

**CAREA®**  
MINERAL COMPOSITE

Mineral  
Organic  
**URBAN**  
Graphic

Mineral  
**ORGANIC**  
Urban  
Graphic



[www.carea-facade.com](http://www.carea-facade.com)  
[contact@carea-facade.co.uk](mailto:contact@carea-facade.co.uk)